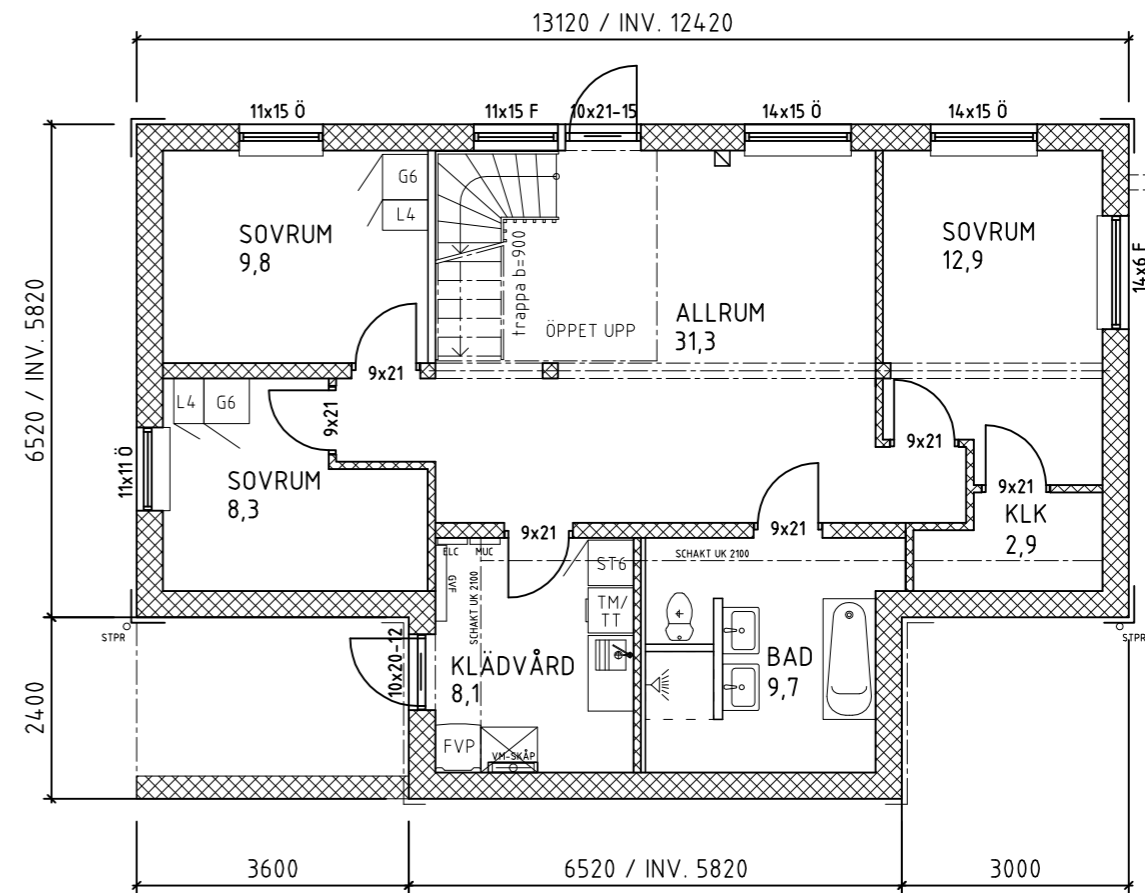
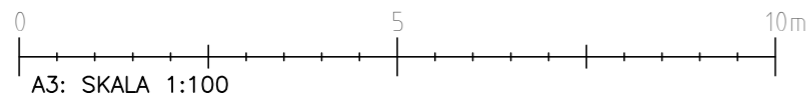


ENTRÉPLAN

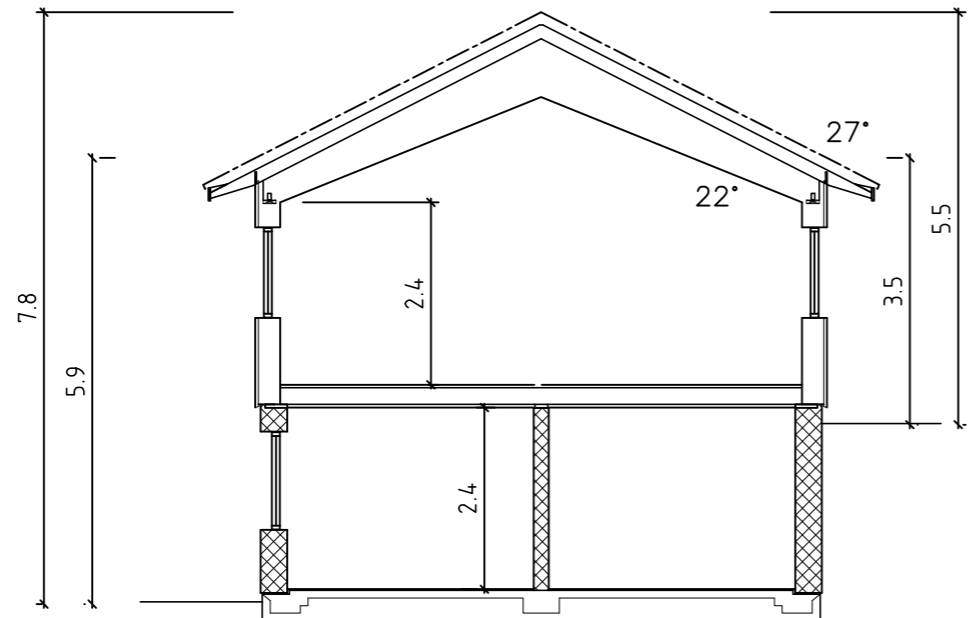
BOYTA 90,0 m²
 TOTAL BOYTA 176,3 m²
 BYGGYTA 104,3 m²



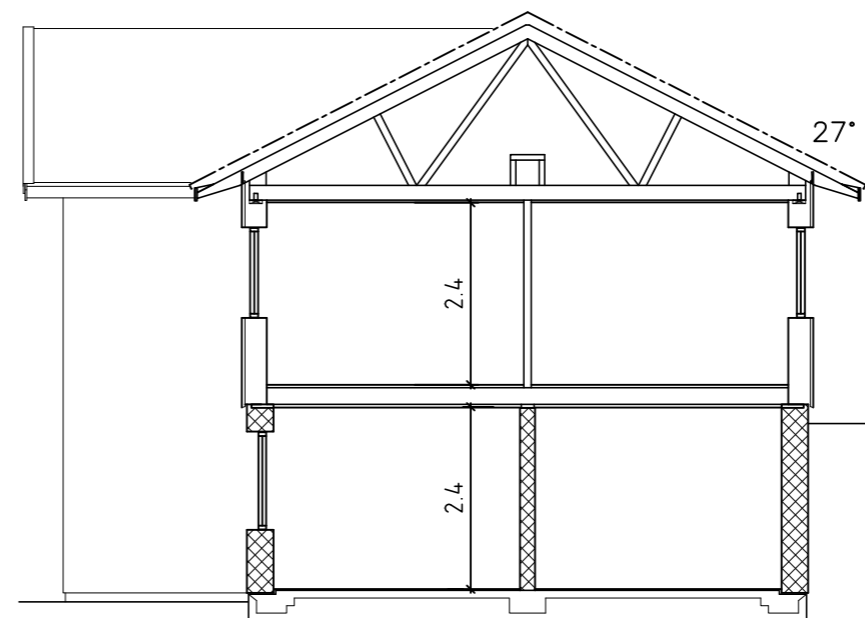
SUTERRÄNGPLAN

BOYTA 86,3 m²

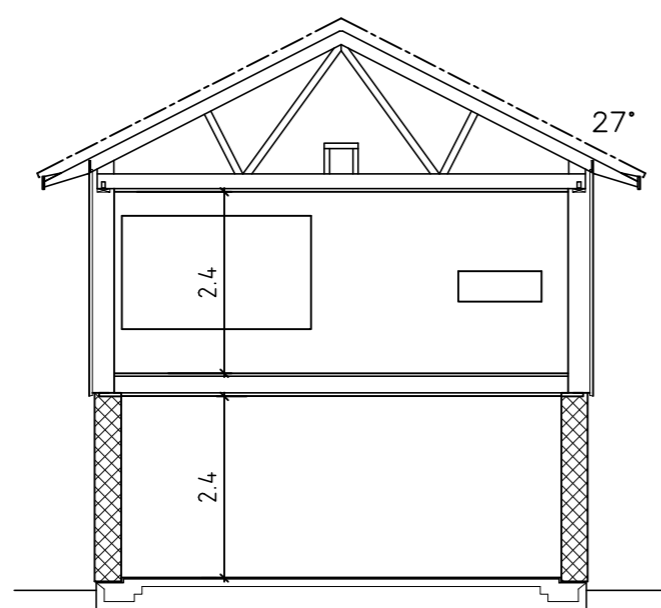
- Ö = ÖPPNINGSBARA FÖNSTER
- F = FASTA FÖNSTER
- R = RÅGLAS
- FM = FASADMÄTARSKÅP
- ELC = ELCENTRAL
- VM = VATTENMÄTARE
- GVF = GOLVVÄRMEFÖRDELARE
- VUK = VATTENUTKASTARE
- — — — — = BALK I BJÄLKLAG
- ≡ ≡ ≡ ≡ ≡ = BALK UNDER BJÄLKLAG
- — — — — = ÖPPNING H=2100
- = ÖPPNING TILL TAK
- IL = INSPEKTIONSLUCKA



SEKTION A - A



SEKTION B - B

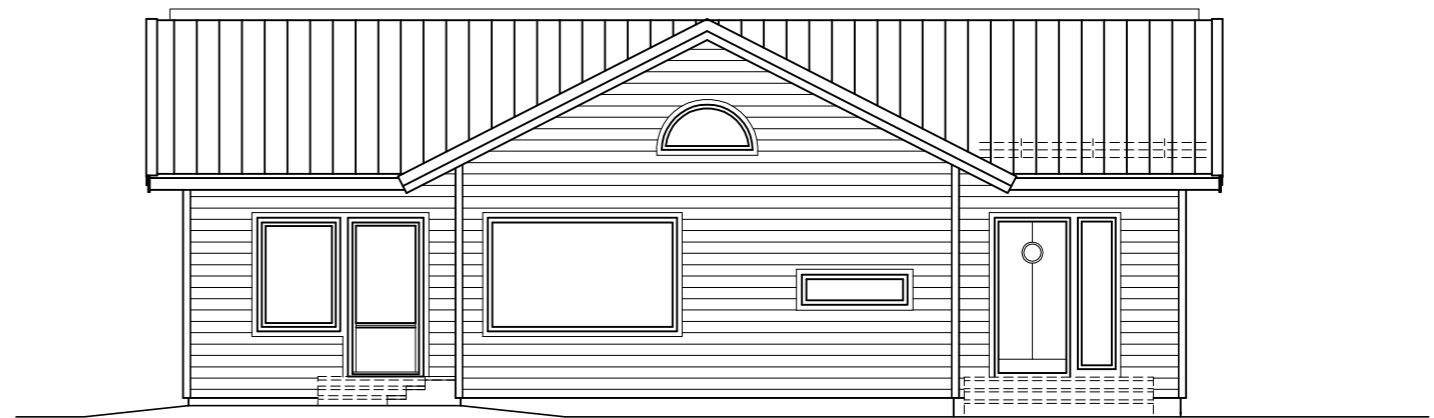


SEKTION C - C

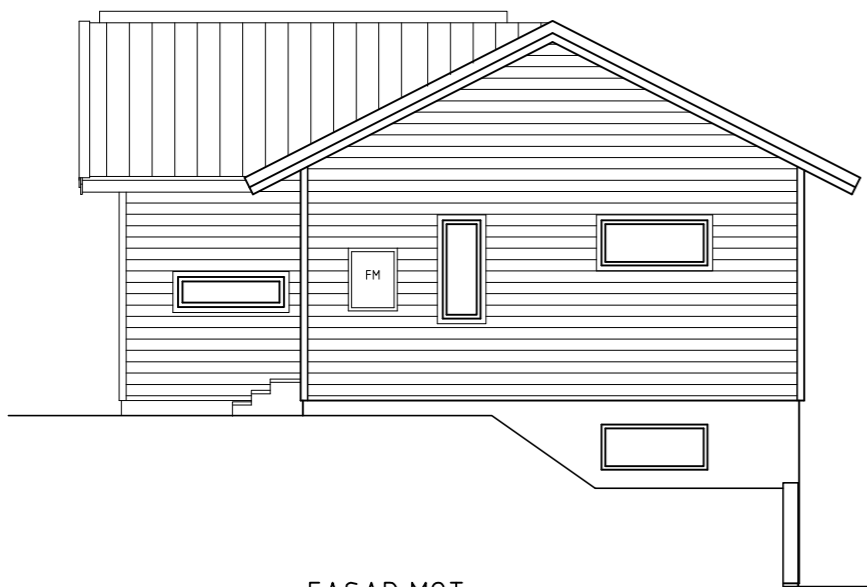




FASAD MOT



FASAD MOT



FASAD MOT



FASAD MOT

