



Husqvarna  
Group

# Repair Instruction



**Wall-mounted-hose-box 15/25/35 roll-up automatic , art. 8022/8023/8024**



Date: 2/2013




Husqvarna  
Group

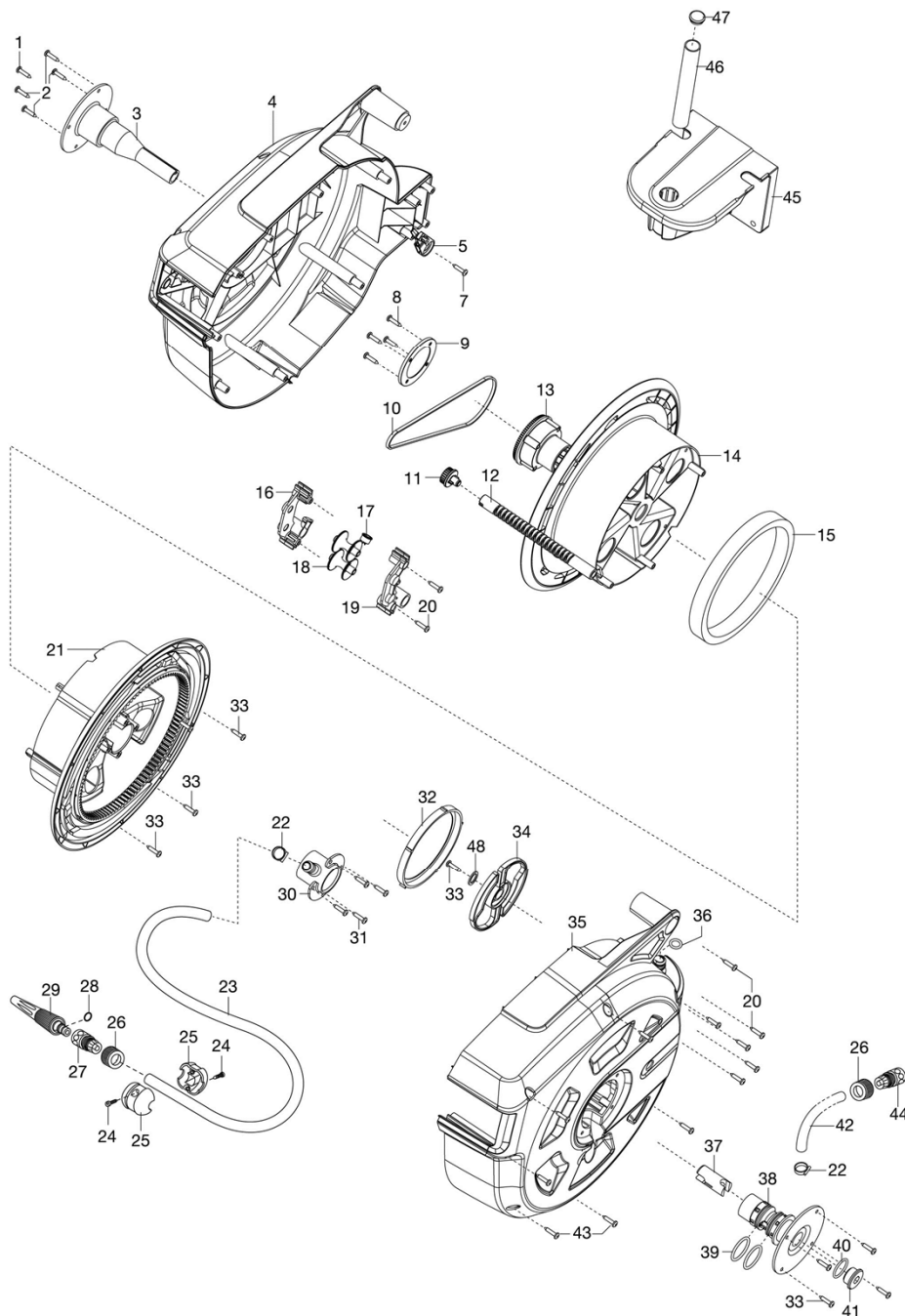
# Repair Instruction



## Wall-mounted-hose-box 15/25/35 roll-up automatic , art. 8022/8023/8024

 **GARDENA** Comfort Wand-Schlauchbox  
15 roll-up automatic

Art.-Nr. 8022/B






Husqvarna  
Group

# Repair Instruction

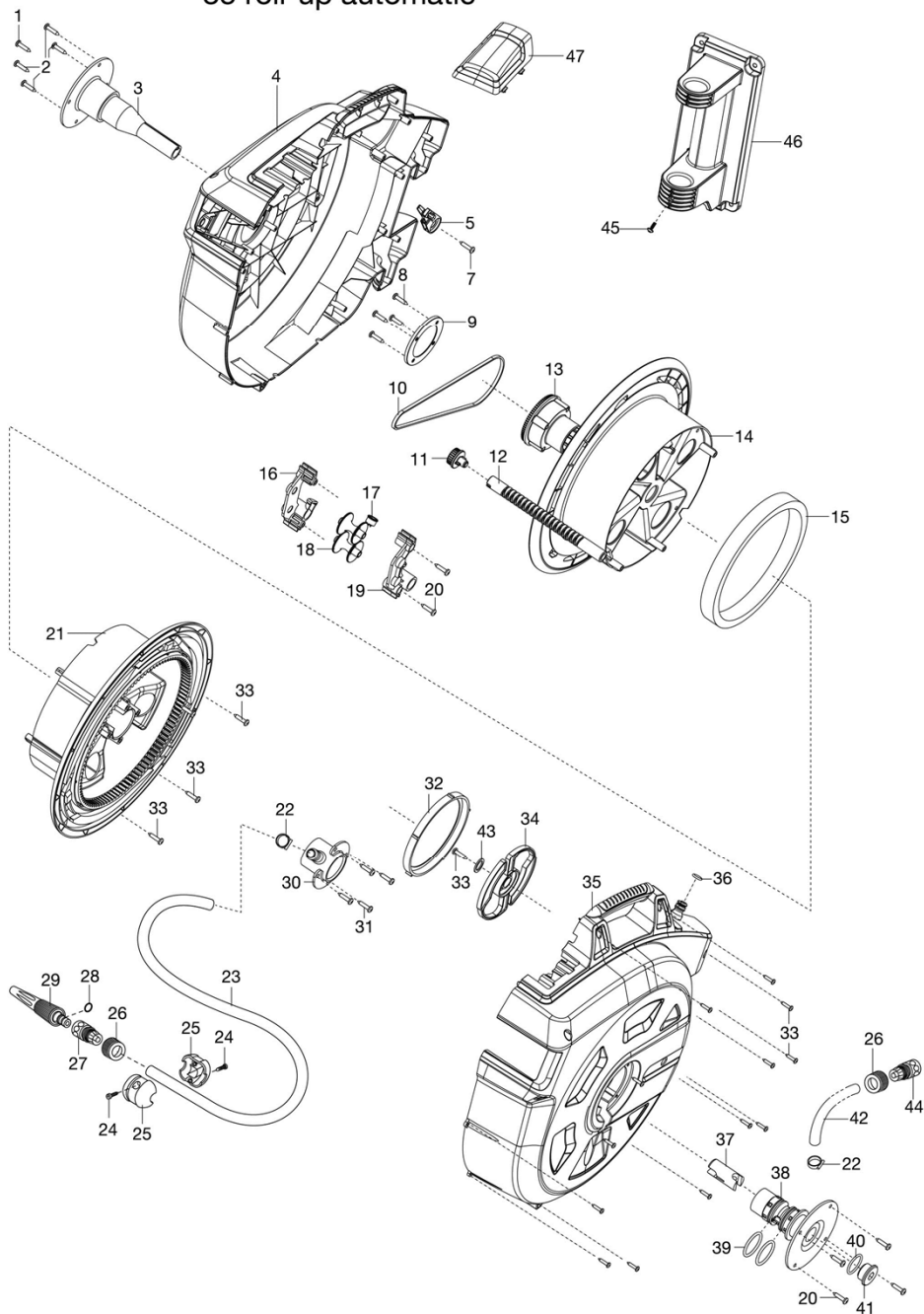



## Wall-mounted-hose-box 15/25/35 roll-up automatic , art. 8022/8023/8024

 **GARDENA** Comfort Wand-Schlauchbox  
25 roll-up automatic  
Comfort Wand-Schlauchbox  
35 roll-up automatic

Art.-Nr. 8023/B

Art.-Nr. 8024/B



 **GARDENA** Comfort Wand-Schlauchbox  
25 roll-up automatic  
Comfort Wand-Schlauchbox  
35 roll-up automatic

Art.-Nr. 8023/B

Art.-Nr. 8024/B

# Repair Insturction

 **GARDENA** Wall-mounted-hose-box 15/25/35 roll-up automatic , art. 8022/8023/8024

## 1. Change of the working hose:

For changing the working hose it's not necessary to open hose box :



Pull out the cpl. hose till the end and lock it.



The hose duct of the drum is now on position "12 o'clock"

# Repair Instruction



## Wall-mounted-hose-box 15/25/35roll-up automatic , art. 8022/8023/8024



Open the middle TORX screw only !



Remove the 4 screws on the opposite side and pull out the axle with the connecting hose



Remove the 4 screws of the flange

# Repair Instuction



## Wall-mounted-hose-box 15/25/35 roll-up automatic , art. 8022/8023/8024



Push in the hose on the outlet and pull out the flange at the same time



Now the hose can be removed from the flange and can be pulled out of the box to replace it.

***Attention : risk of injury !***

***Pull out the hose carefully to prevent an unlocking of the drum !!!***

# Repair Instruction



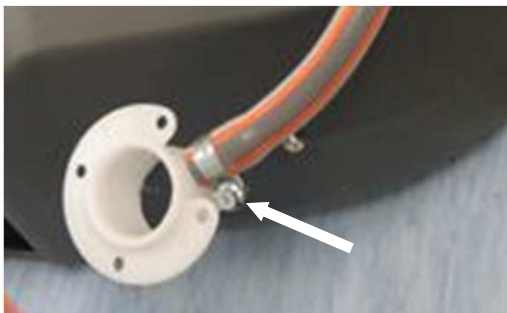
## Wall-mounted-hose-box 15/25/35 roll-up automatic , art. 8022/8023/8024



Push the new hose through the outlet into the box and insert it into the duct of the drum



Grab the hose in the center of the drum and pull it out



Fix the flange to the hose and watch for the correct position of the hose clamp !

# Repair Instuction



## Wall-mounted-hose-box 15/25/35 roll-up automatic , art. 8022/8023/8024



Clean the flange inside,  
reinstall it and screw it in  
place



Put some grease ( f.e.  
Turmsilon GTI 300P ) to the  
o-rings and reinstall the axle



Mount the stopper and nozzle  
first, then let roll up the hose.

# Repair instuction



## Wall-mounted-hose-box 15/25/35 roll-up automatic , art. 8022/8023/8024

### 2. Exchange of the coil winder (open the box) :



The axel with the connecting hose is already removed.

Fixe the hose box with a c-clamp and then open all screws of the upper shell.



Lift off the upper shell .

**Important: Be carefull that the spline shaft of the coil winder still remain in the lower housing guidance. Secure it by hand !**

**Keep the position of the coil winder in mind ( down ) !**



Hold the drum and pull out the coil winder off the guidance. Turn the drum slowly clockwise to relieve the tension of the spring.

# Repair Instructon



## Wall-mounted-hose-box 15/25/35 roll-up automatic , Art. 8022/8023/8024



Open both screws and pull apart the reel holder.



Reel holder le. and ri. , reels , spline shaft and sliding block can be replaced.

Grease it with **Turmsilon GTI 300P**

# Repair Instruction



## Wall-mounted-hose-box 15/25/35 roll-up automatic , art. 8022/8023/8024

### 3. Replacement of the tooth belt:



After relieving the tension of the spring the drum can be lifted out of the shell



Tooth belt:

**8022: 537-3M-4**

**8023/8024 : 633-3M-4**



Check the catch for dirt and clearance

# Repair Instruction

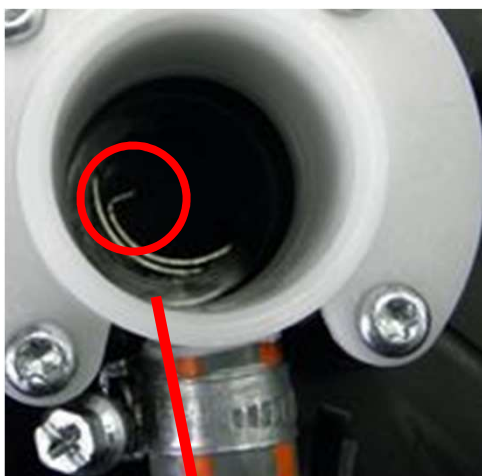


## Wall-mounted-hose-box 15/25/35 roll-up automatic , art. 8022/8023/8024

### 4. Assembling in reverse order:



When reinstalling the drum keep attention that the tooth belt is under tension and to the tongue and groove joint



tongue of the spring



groove in the axle

# Repair instruction



## Wall-mounted-hose-box 15/25/35 roll-up automatic , art. 8022/8023/8024



Insert the pinion with tooth belt under tension



Secure the pinion by pressing it down



Turn the drum counterclockwise . While turning press down the pinion to prevent a get off of tooth belt.

15m = 8 turns

25m = 7,5 turns

35m = 8 turns

# Repair Instruction



## Wall-mounted-hose-box 15/25/35 roll-up automatic , art. 8022/8023/8024



Mount the coil winder in "down" position in the lower shell !



Reinstall the upper shell. The spline shaft must be inserted into the upper guidance



Fix the residual shell screws and insert the axel with the connecting hose.

**After the repair check the roll up mechanism and tightness!**