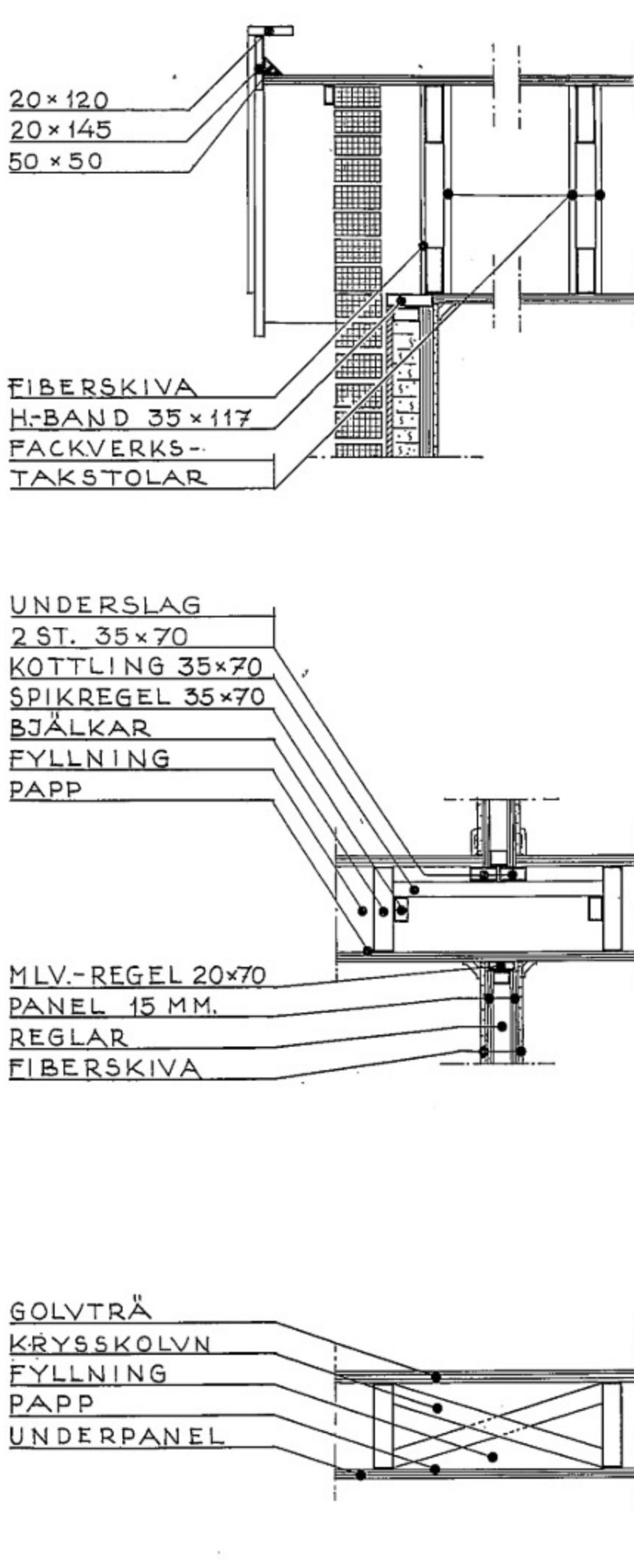
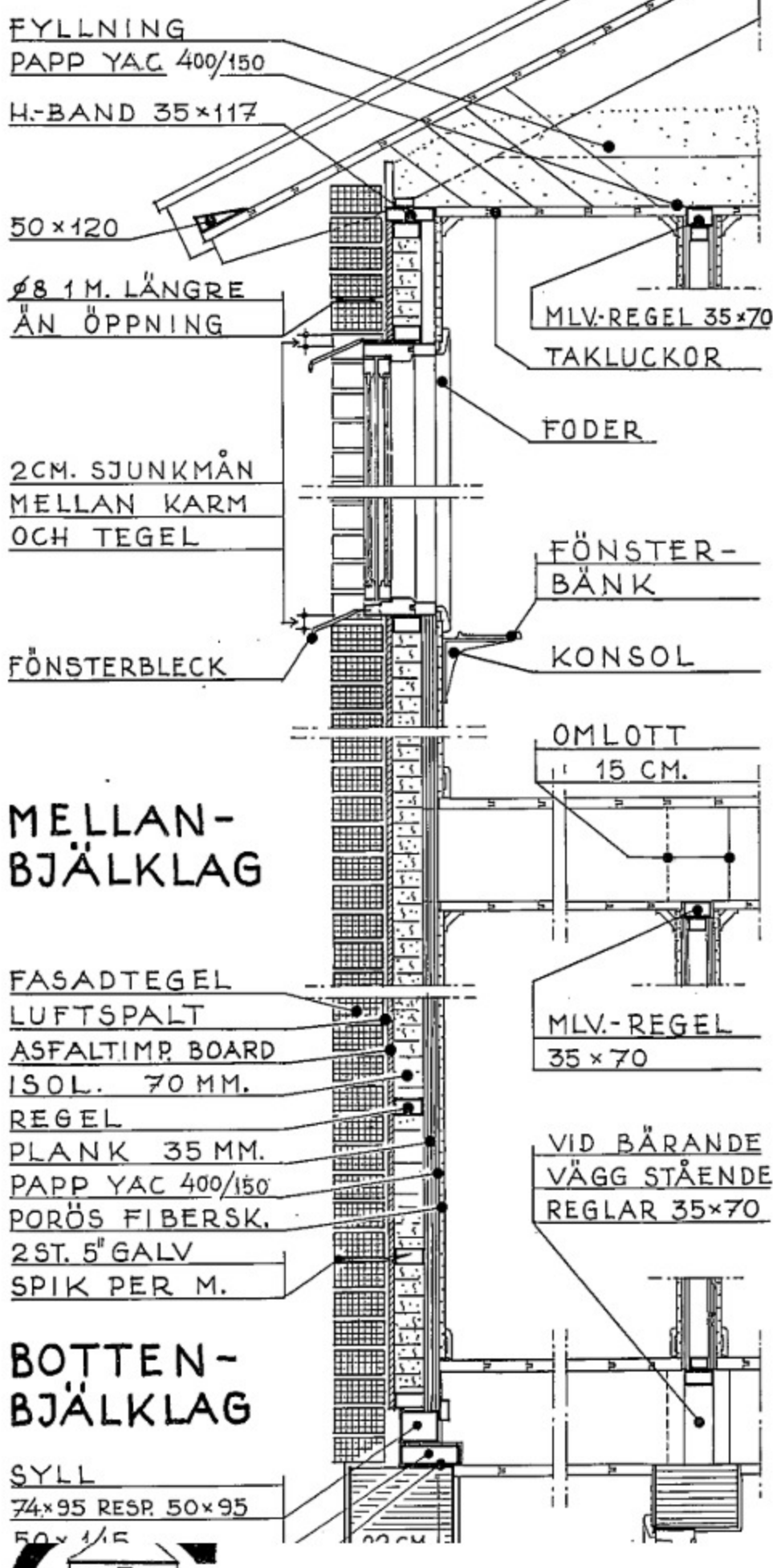
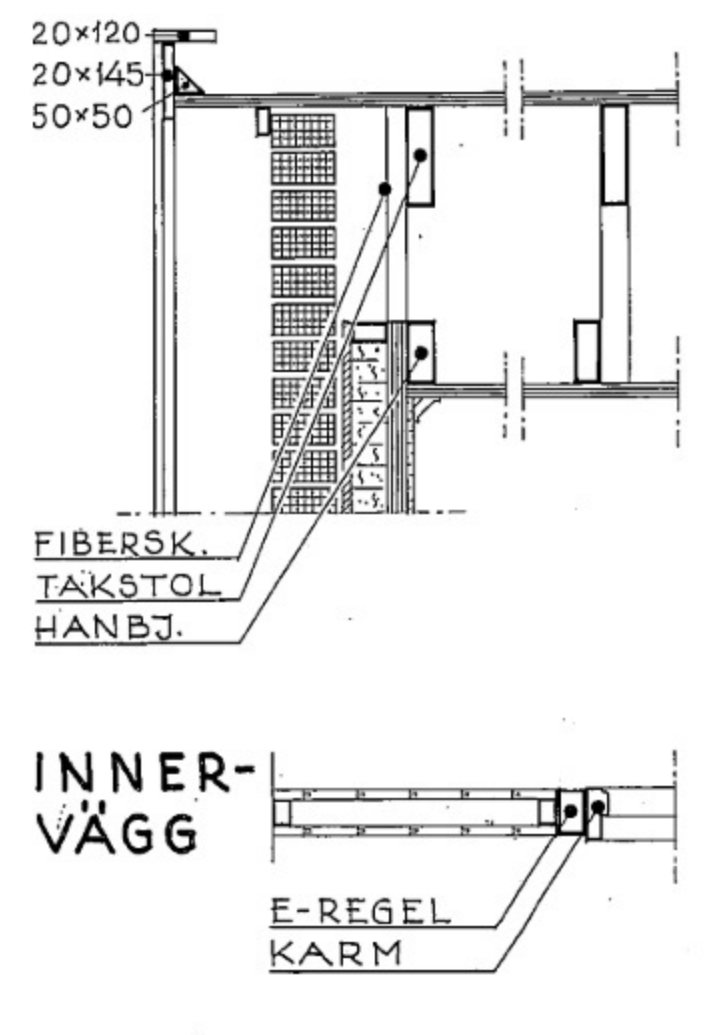
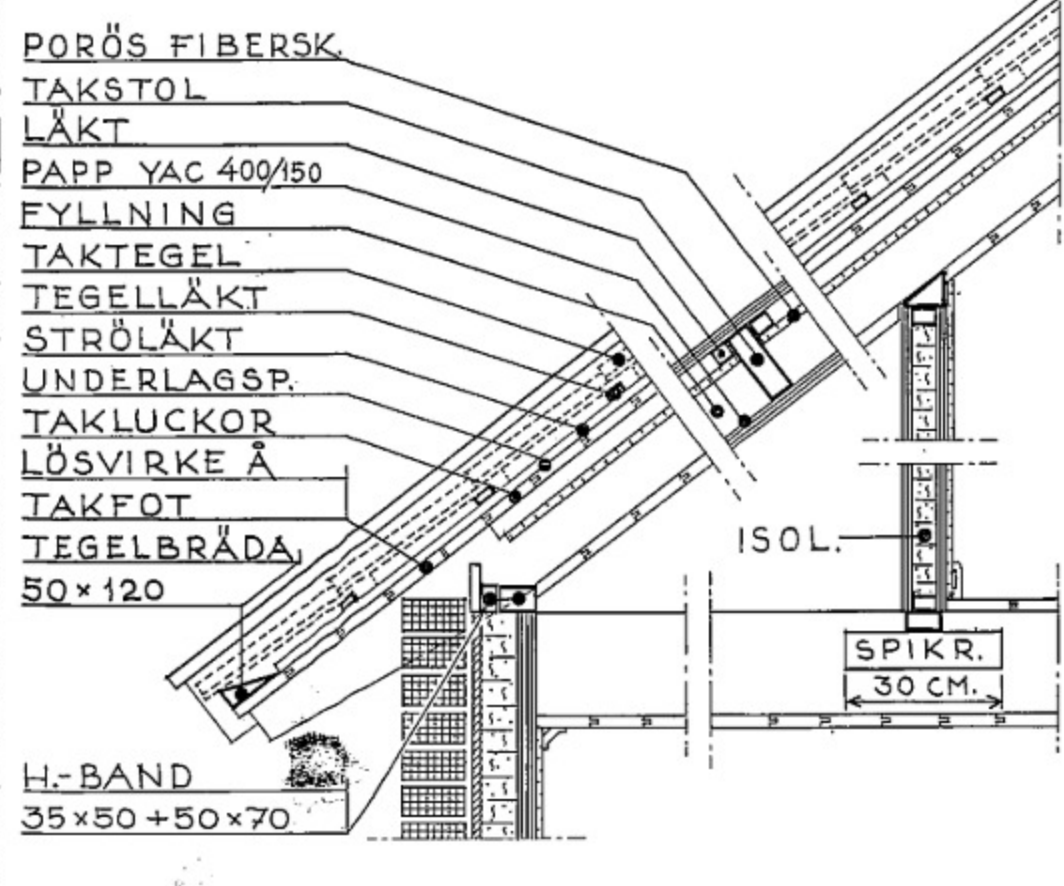


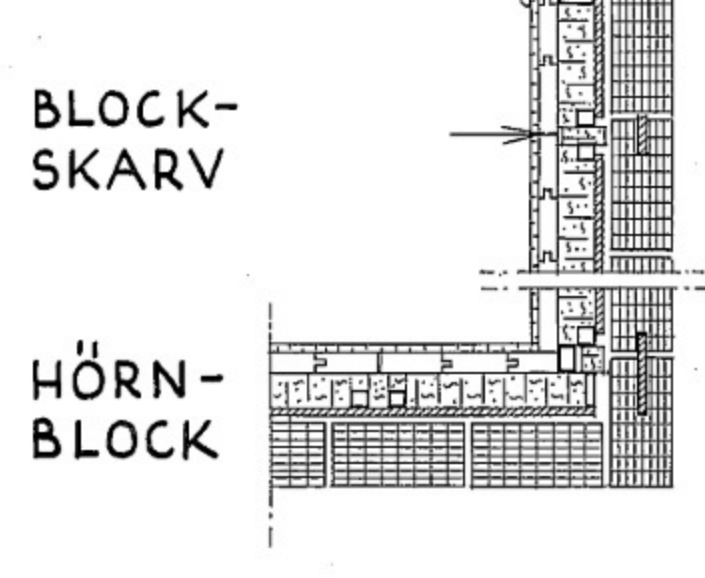
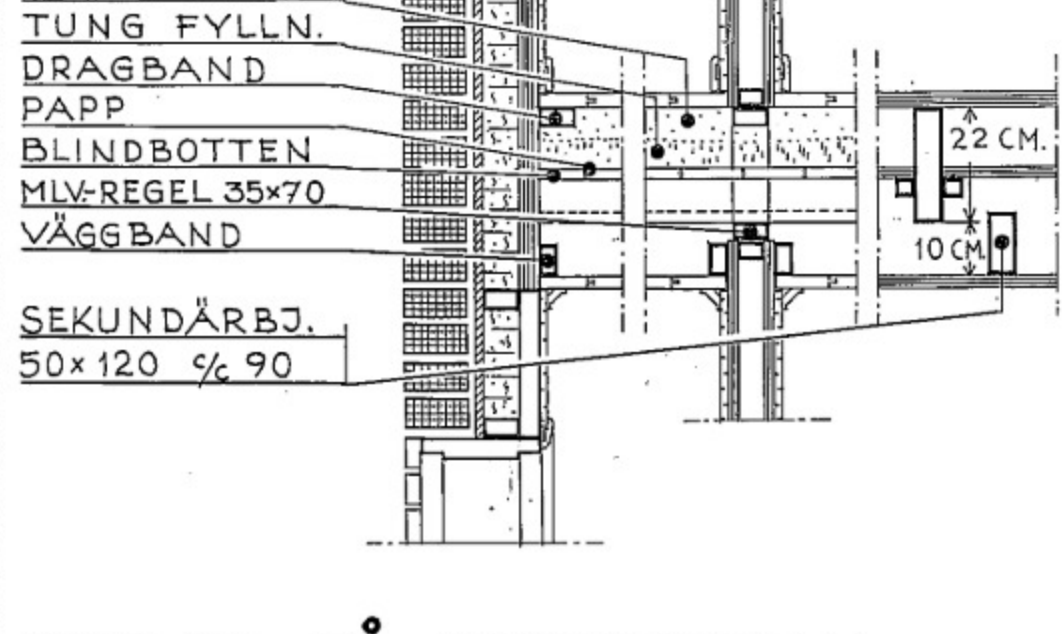
FACKVERKSTAKSTOLAR VID 1½ PLANSHUS



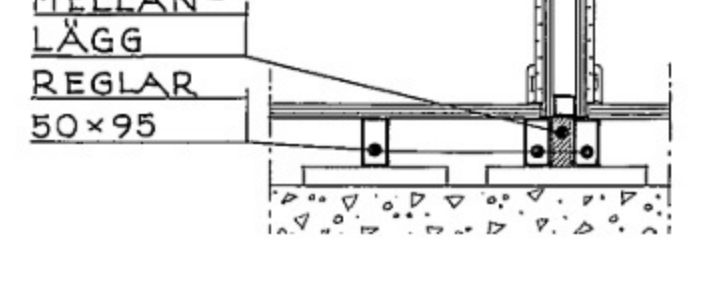
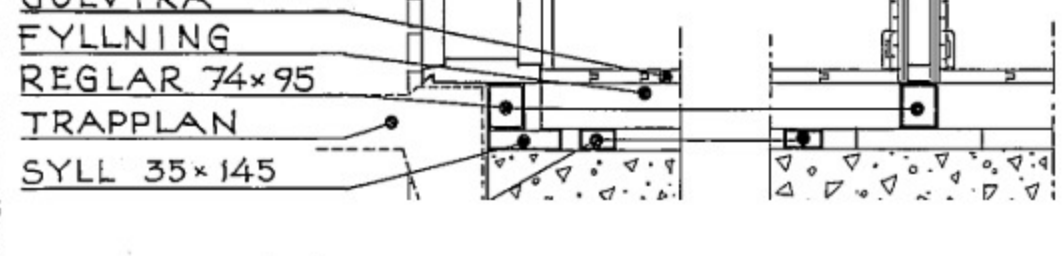
TAKSTOL VID 1½ PLANSHUS



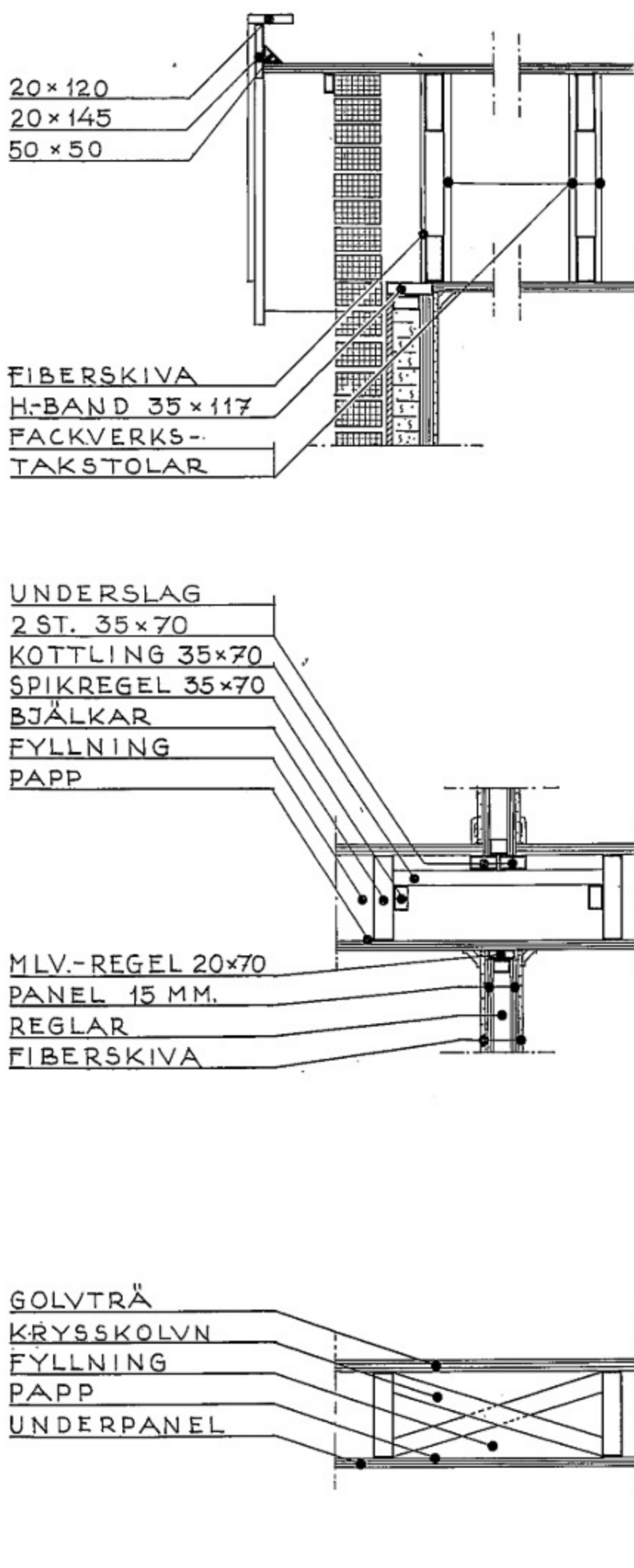
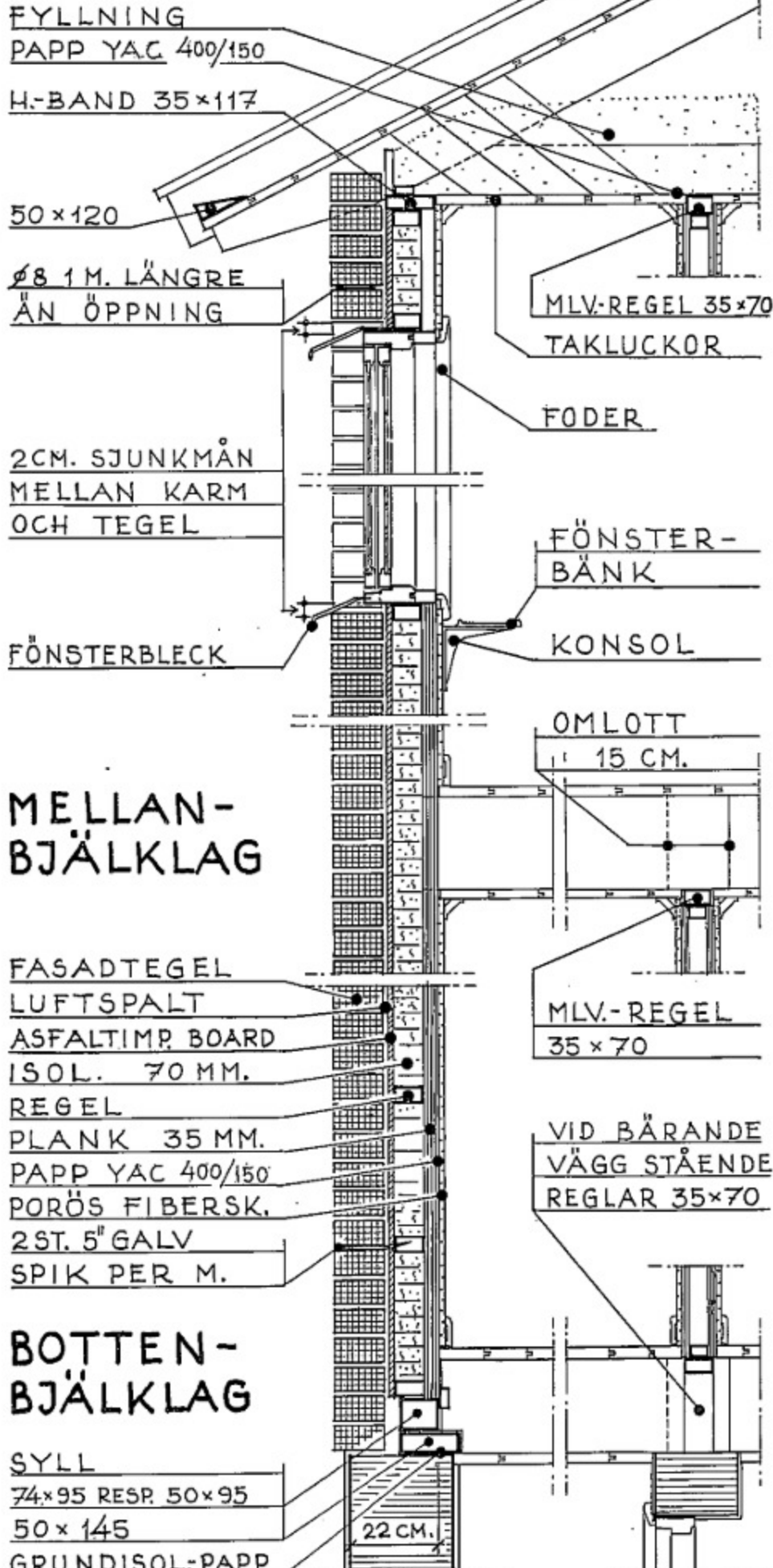
LJUDISOLERANDE MELLANBJÄKL.



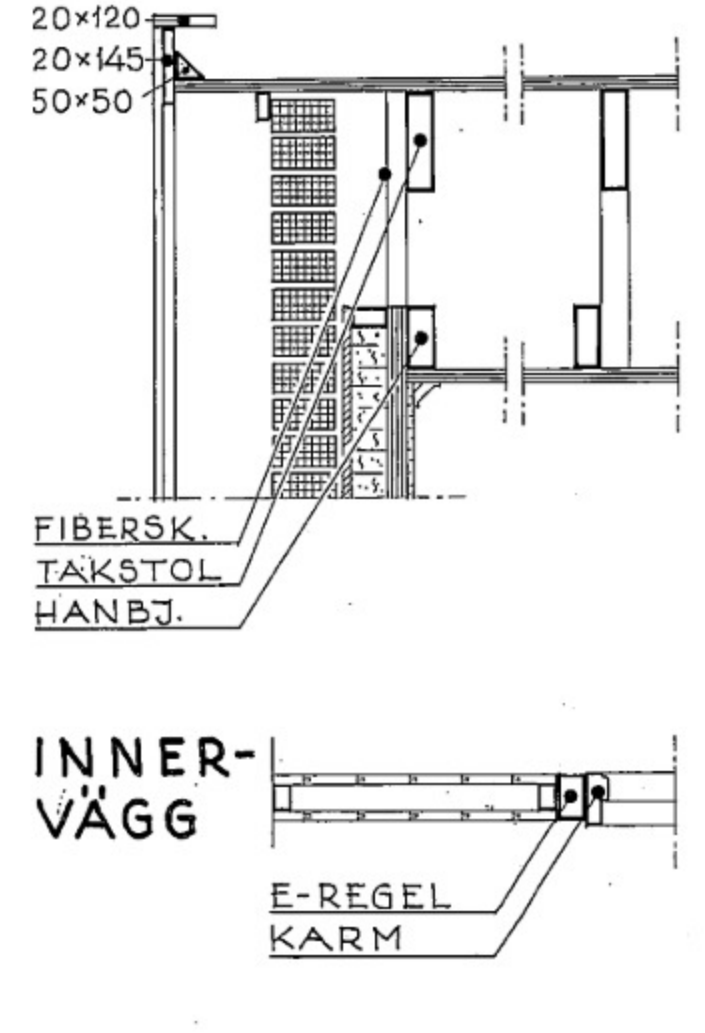
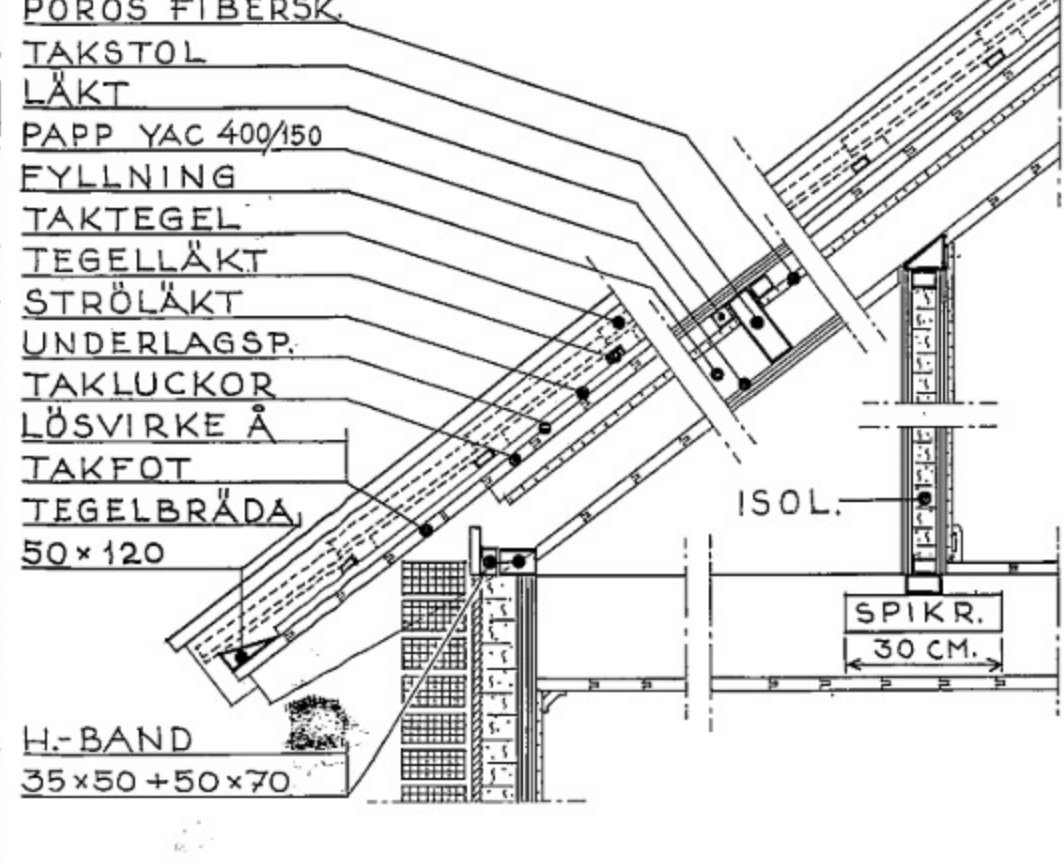
REGLAR PÅ BETONGVALV



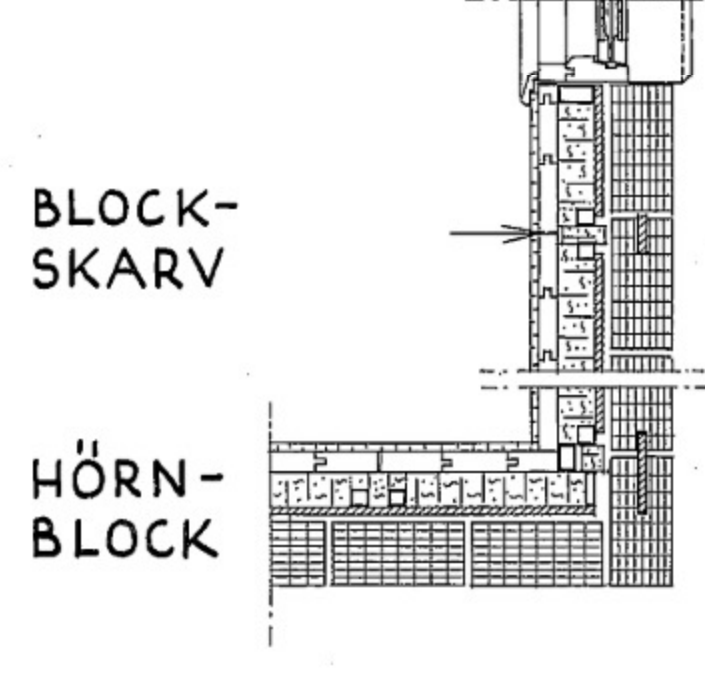
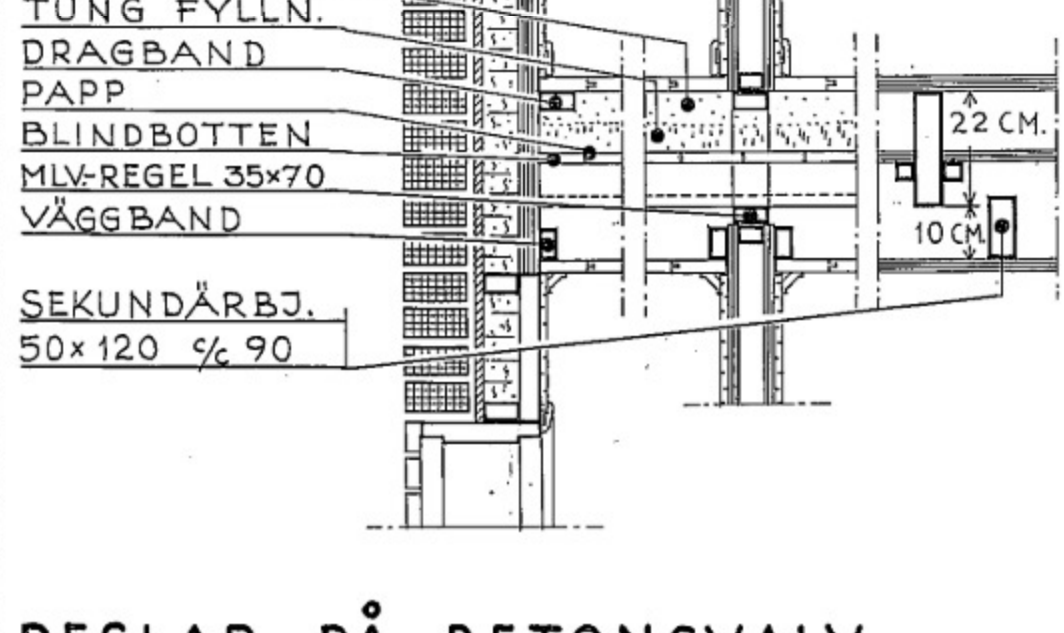
FACKVERKSTAKSTOLAR VID 1½ PLANSHUS



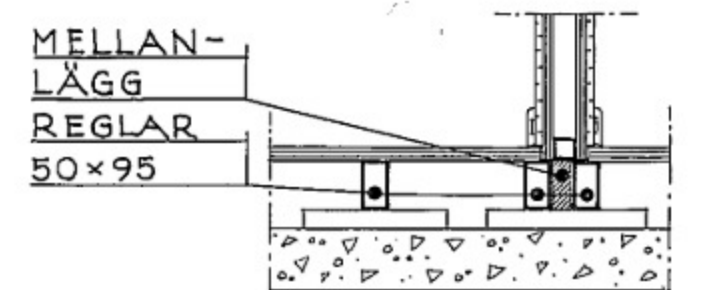
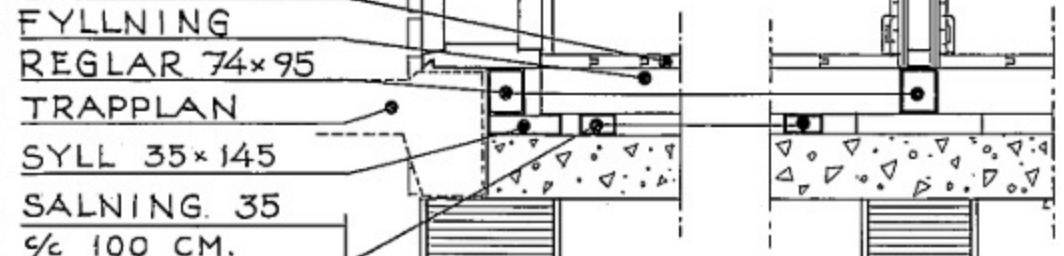
TAKSTOL VID 1½ PLANSHUS



LJUDISOLERANDE MELLANBJÄKL.

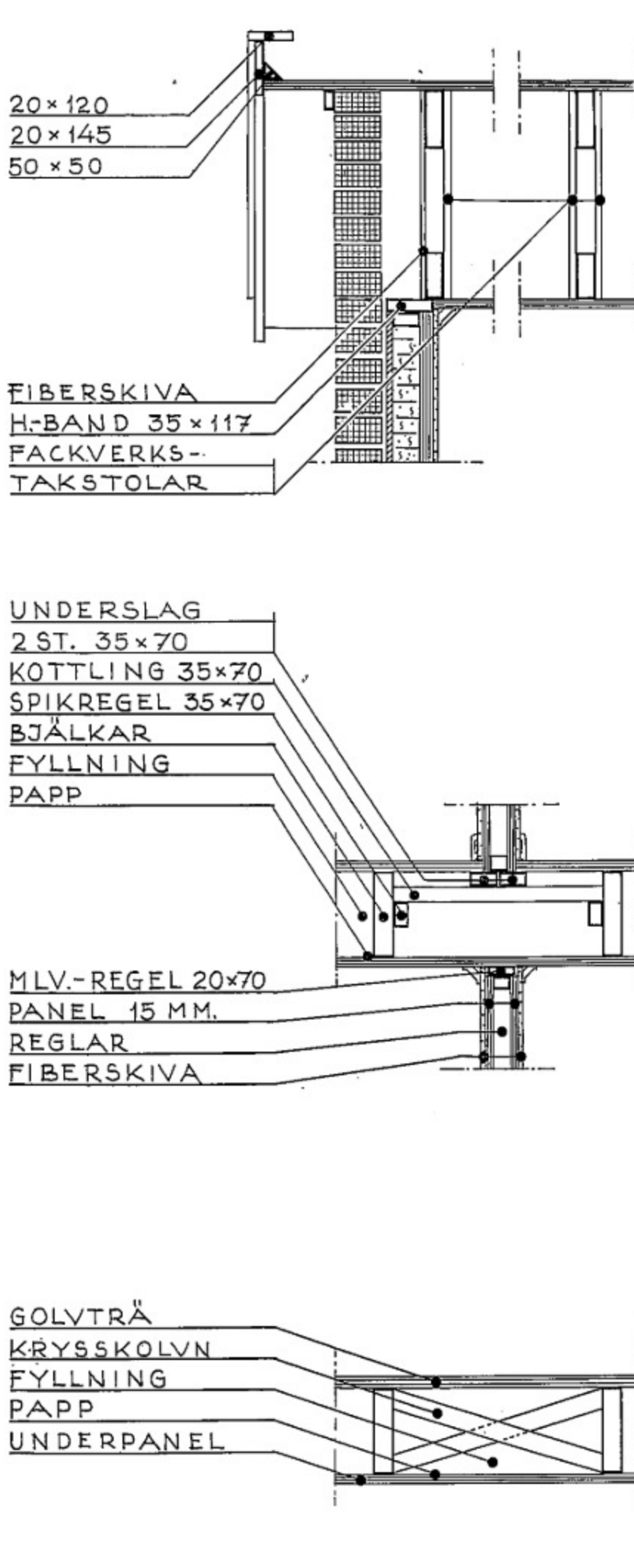
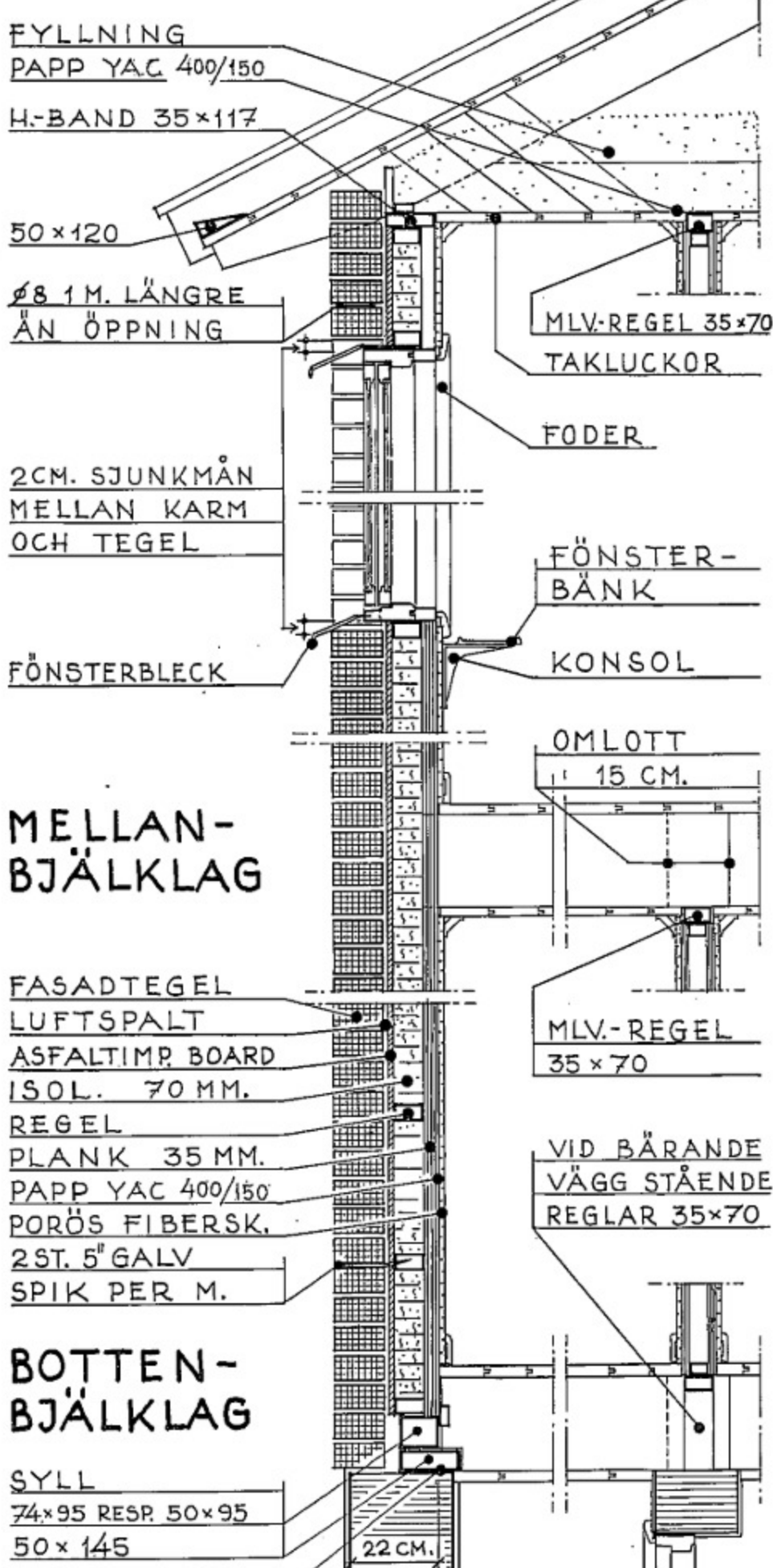


REGLAR PÅ BETONGVALV

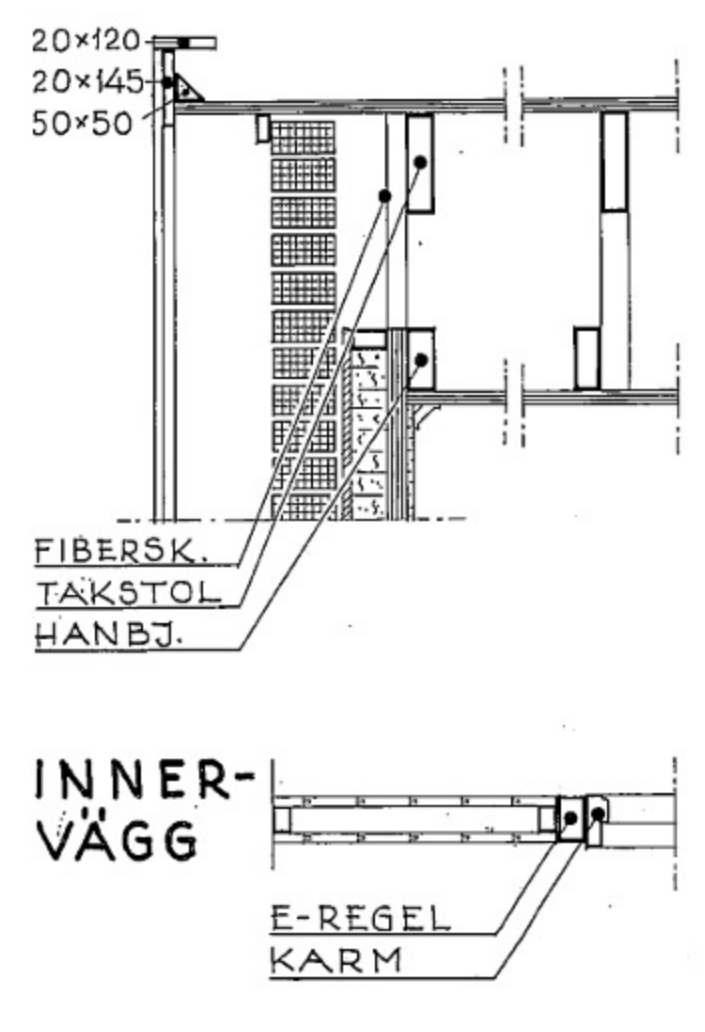
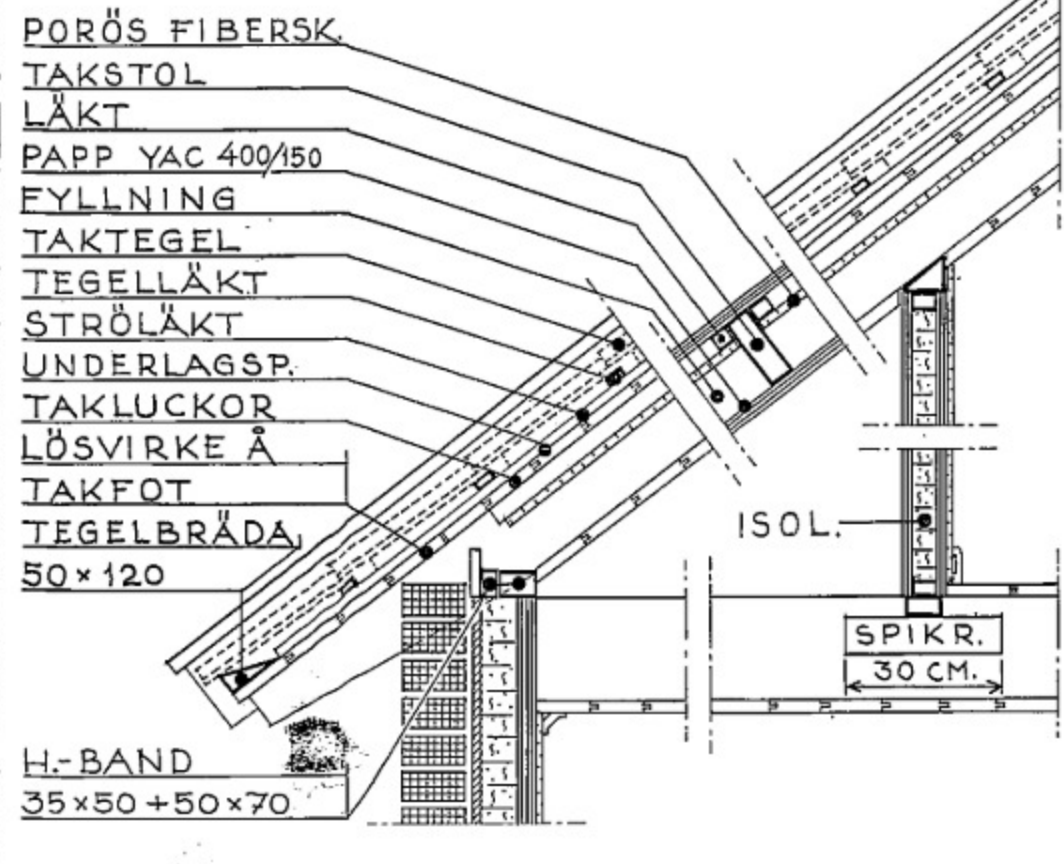


CM 10 0 1 2 3 4 5 10 DM.
SKALA 1:20

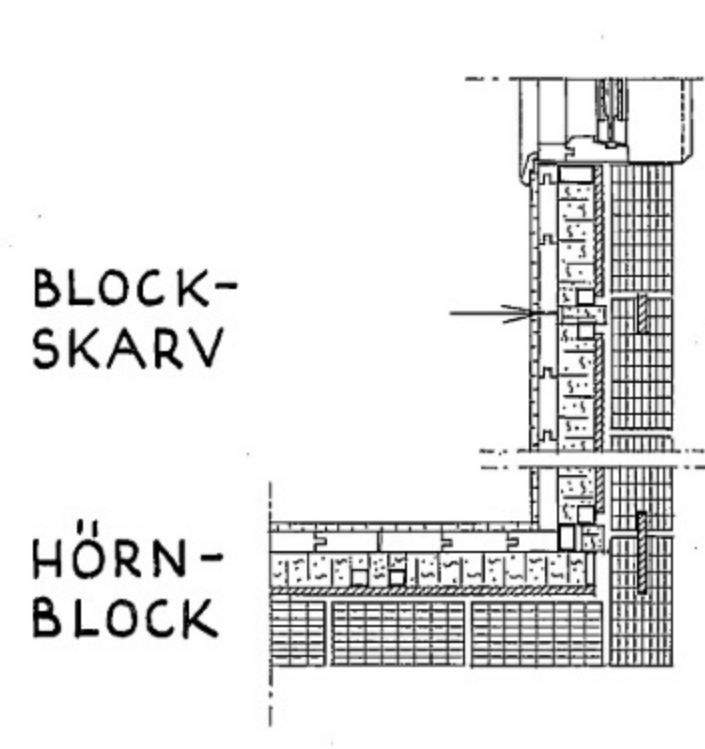
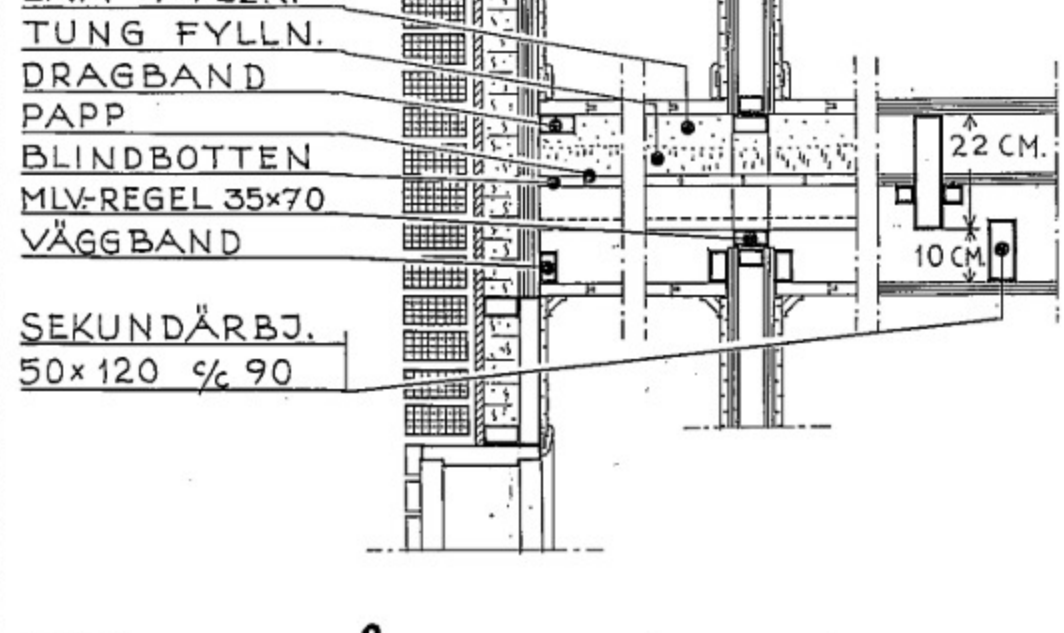
FACKVERKSTAKSTOLAR VID 1½ PLANSHUS



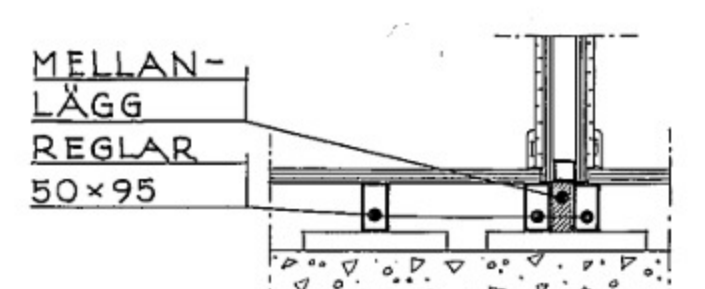
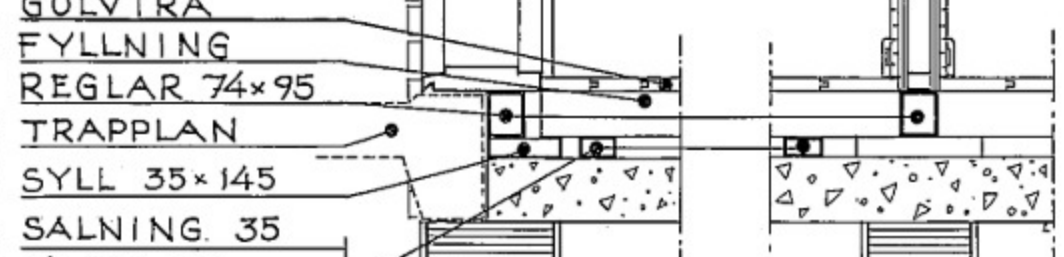
TAKSTOL VID 1½ PLANSHUS



LJUDISOLERANDE MELLANBJÄKL.

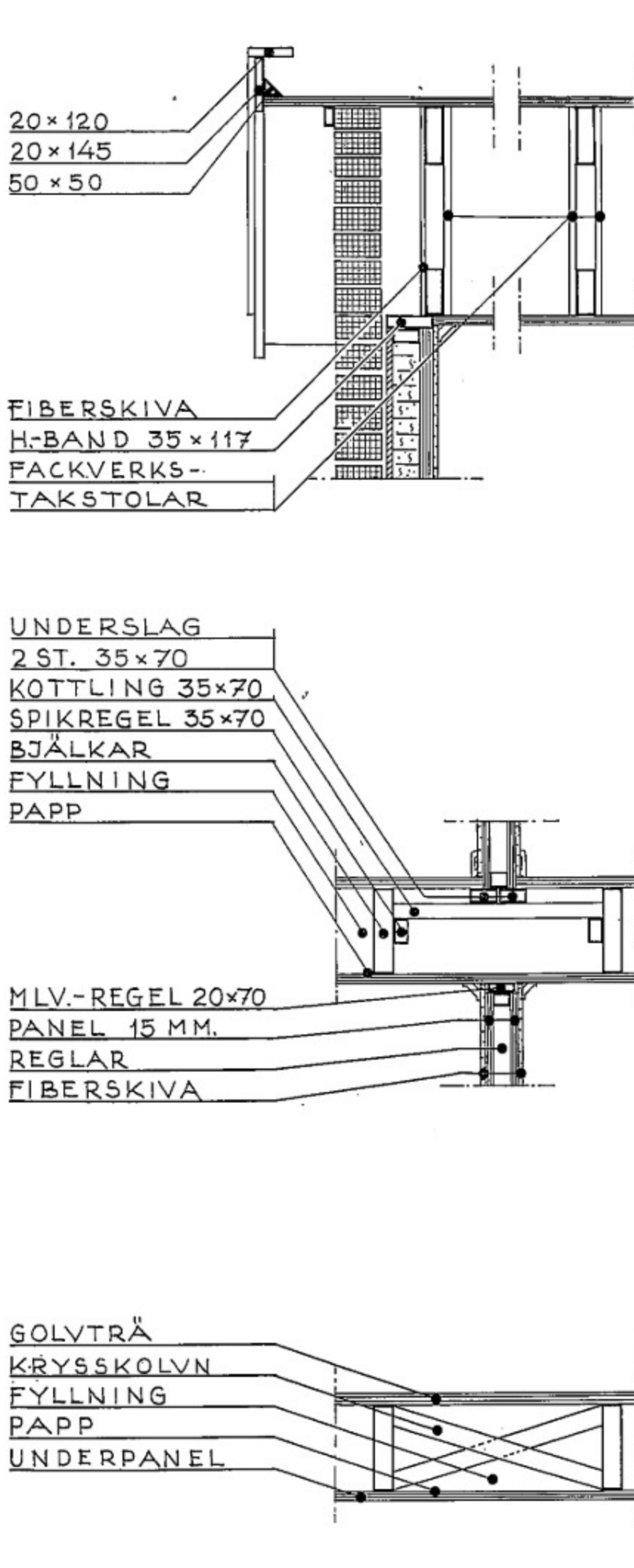
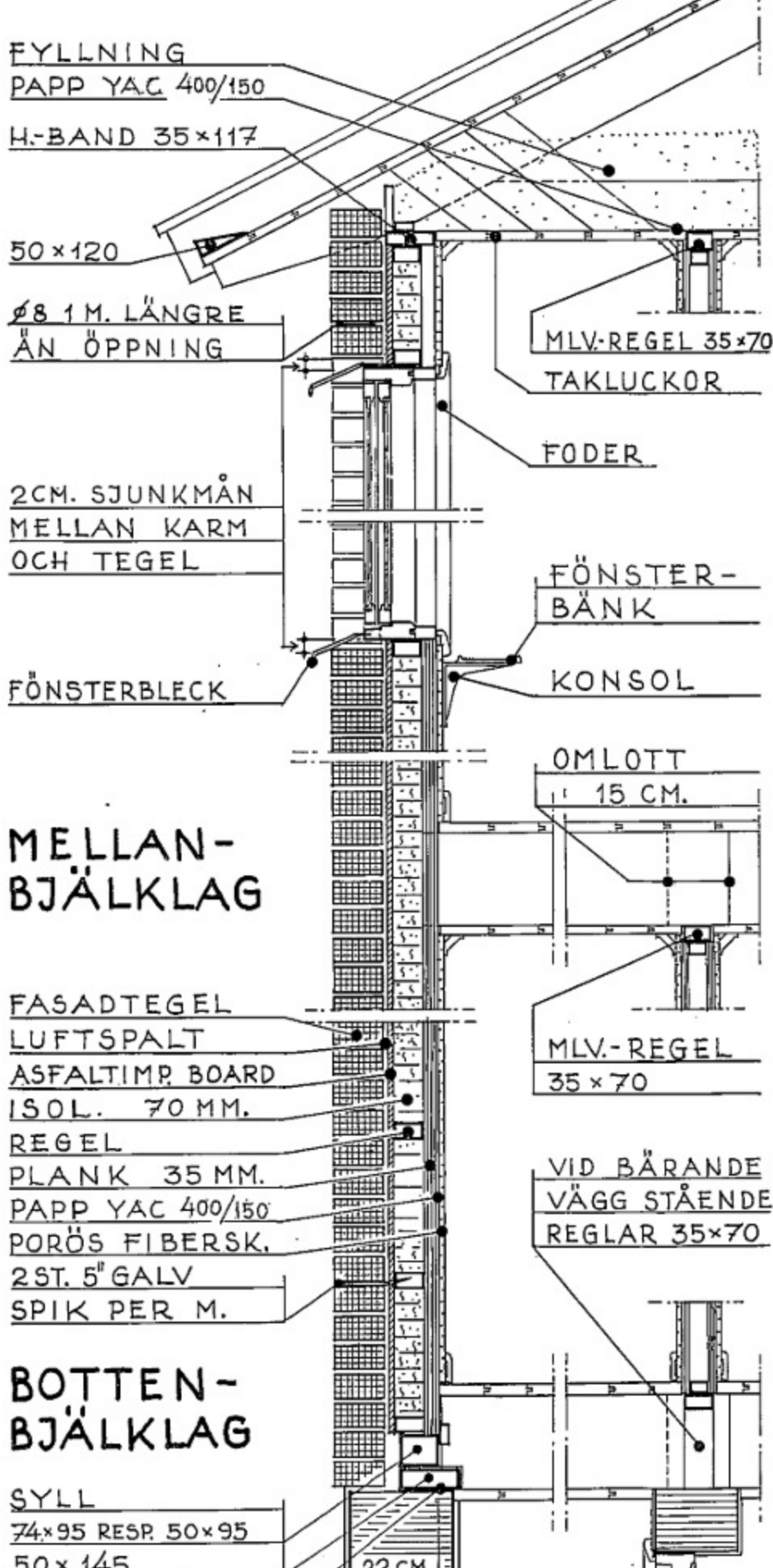


REGLAR PÅ BETONGVALV

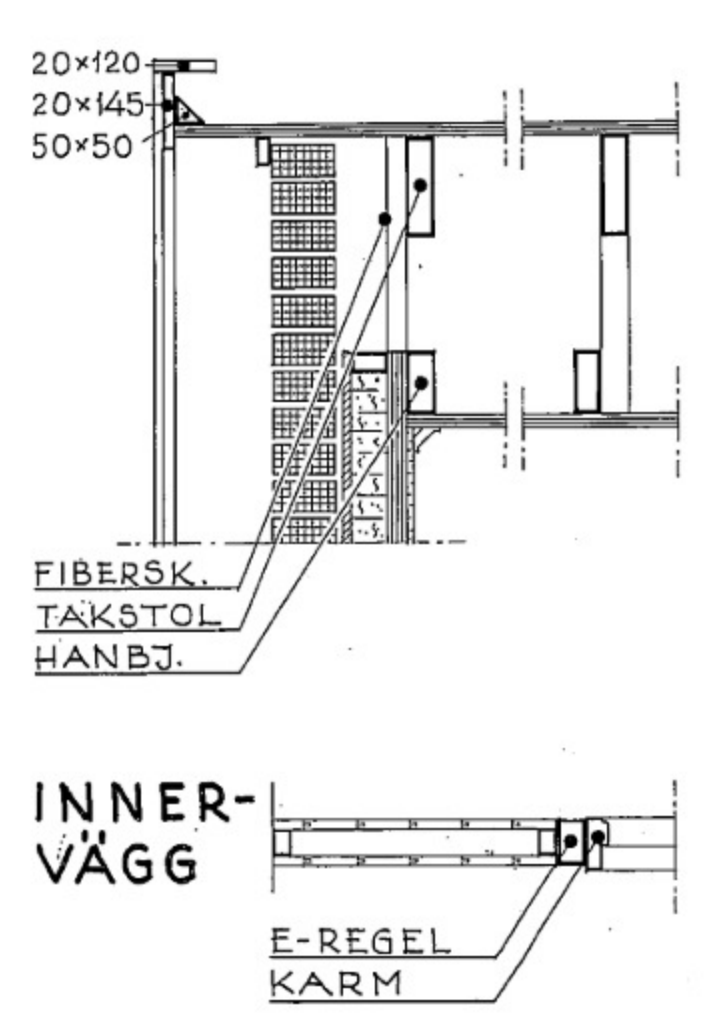
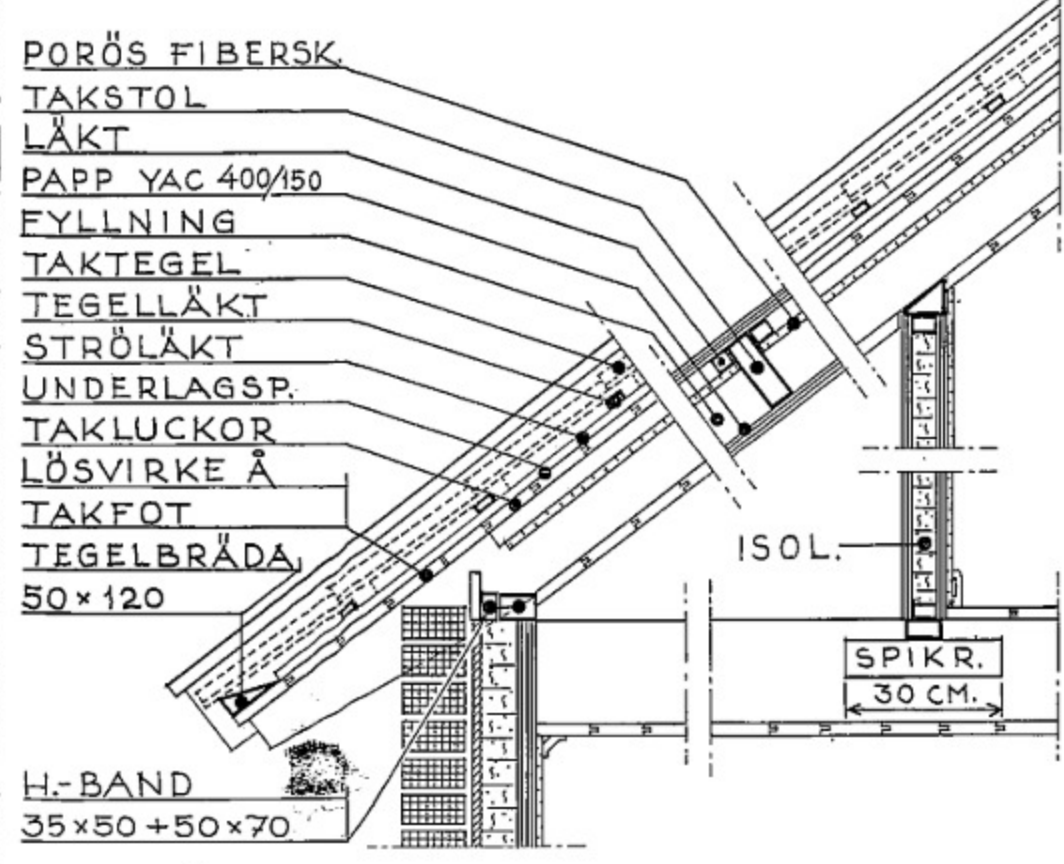


CM 10 0 1 2 3 4 5 10 DM.
SKALA 1:20

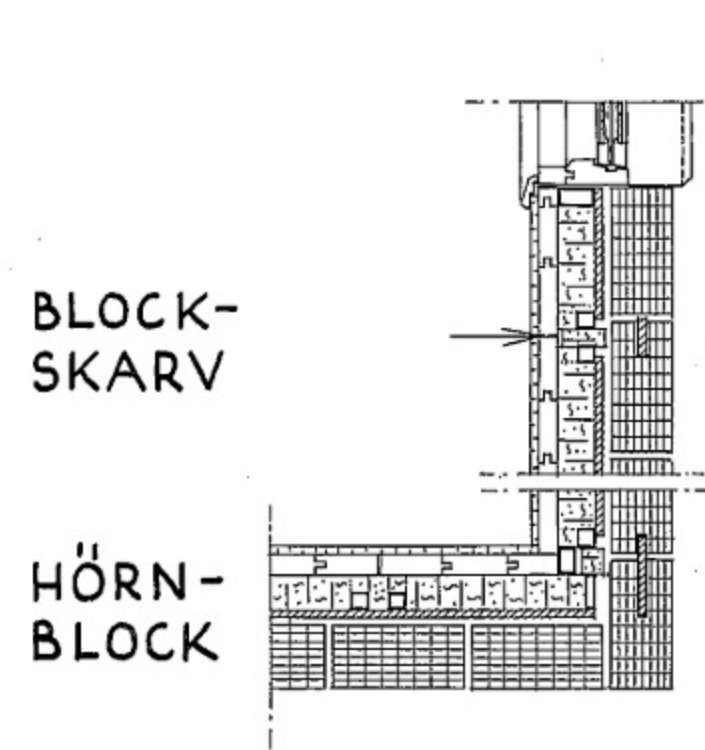
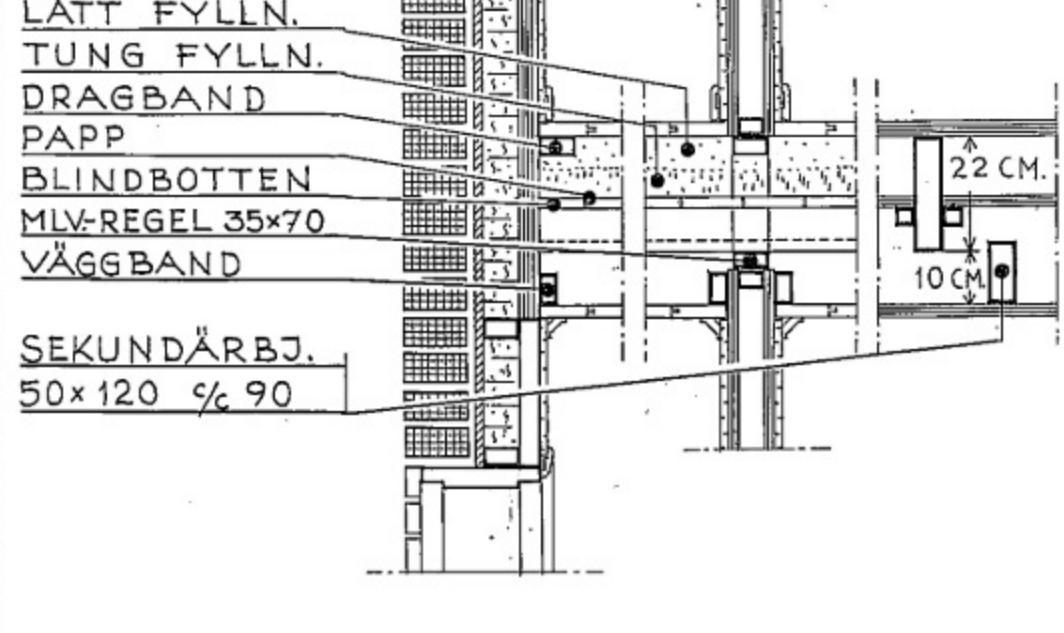
FACKVERKSTAKSTOLAR VID 1½ PLANSHUS



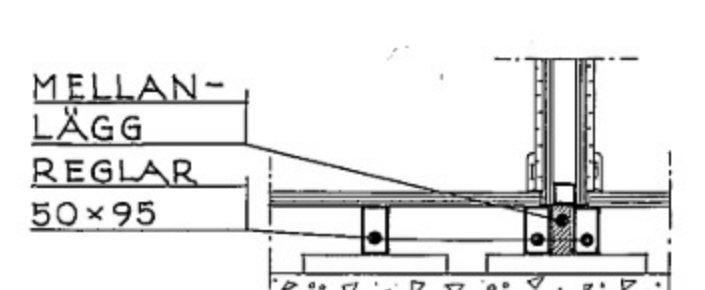
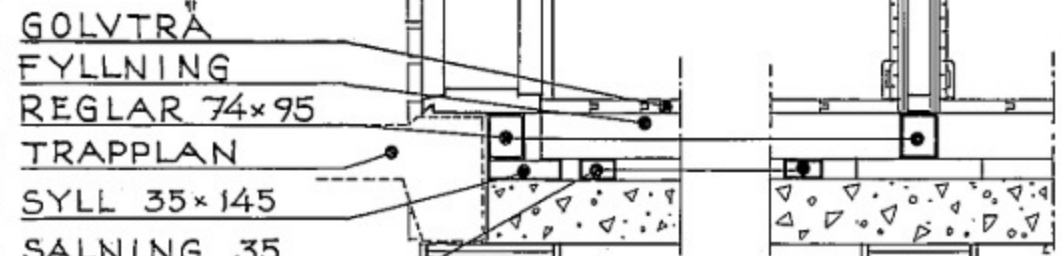
TAKSTOL VID 1½ PLANSHUS



LJUDISOLERANDE MELLANBJÄKL.



REGLAR PÅ BETONGVALV



CM 10 0 1 2 3 4 5 10 DM.
SKALA 1:20