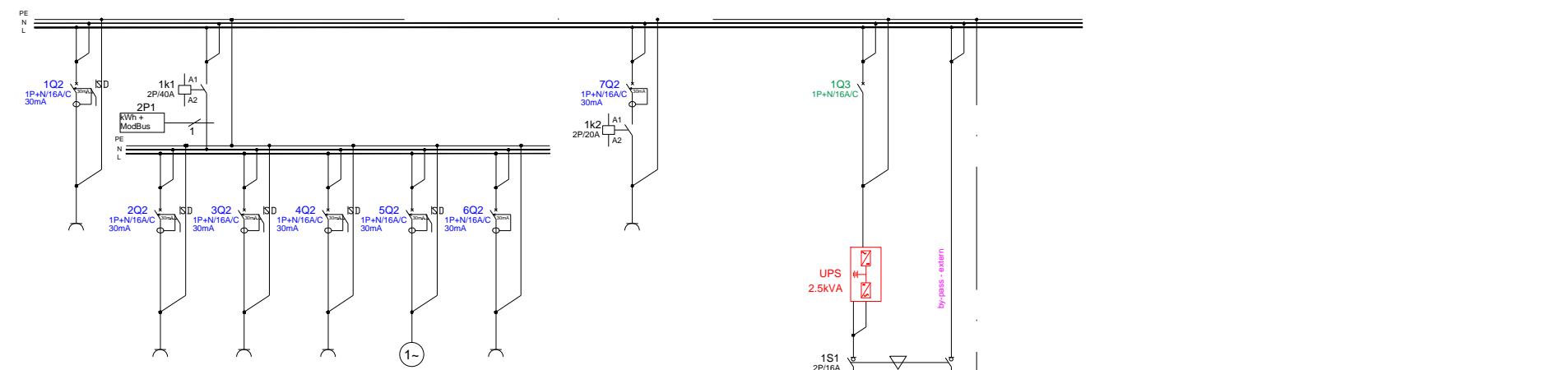


Circuit name	SPD	CL1 - ON/OFF LIGHTS										CL1 - DIMMABLE LIGHTS			C3					
PI [kW]	-	0.1	0.1	0.1	0.2	0.1	0.1	0.1	0.1	0.1	0.1	0.1	0.1	0.1	0.1	0.1	0.1	0.1	0.1	0.1
Ic [A]	-	0.5	0.5	0.5	1	0.5	0.5	0.5	0.5	0.5	0.5	0.5	0.5	0.5	0.5	0.5	0.5	0.5	0.5	0.5
Cable type [mm ²]	-	3x1,5	3x1,5	3x1,5	3x1,5	3x1,5	3x1,5	3x1,5	3x1,5	3x1,5	3x1,5	3x1,5	3x1,5	3x1,5	3x1,5	3x1,5	3x1,5	3x1,5	3x1,5	3x1,5
Destination	Surge Protection Device	storage room lights	hall lights	bathroom lights	living suspend light	kitchen LED lights	kitchen suspended lights	Small dorm office lights	balcony lights											
Command	-	Comanda i1	Comanda 5	Comanda i2	Comanda i3	Comanda i5	Comanda i6	Comanda i8	Comanda i10	all sockets off	Balcony panel switch									

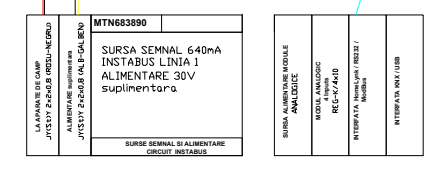


CP1	CP2	CP3	CP4	CF1	CP5
1	1	1	1	2	1
5	5	5	5	10	5
3x2,5	3x2,5	3x2,5	3x2,5	3x4	3x2,5
Fridge + Freezer	washer machine	Kitchen Countertops LED strip + hood	washer / dryer	Hub + oven power supply	living + dorm sockets

CP6
1
5
3x2,5
Balcony Panel

Circuit name	CP1-UPS	CP2-UPS	CP3-UPS
PI [kW]	1	0.5	1
Ic [A]	5	2.5	5
Cable type [mm ²]	3x2,5	3x2,5	3x2,5
Destination	Rack power supply	kitchen, big dorm, small dorm	Living - TV, Apple TV, dormitor mic-PC, iMac

C3	Actuatoare		
0.05	0.05	0.05	-
0.3	0.3	0.3	-
2x1	2x1	2x1	-
C3.1 Electrovana Living	C3.2 Electrovana Small dorm	C3.3 Electrovana Big dorm	Alimentare actuator/Buzzer



T. Apartament		
Q0	Separator de sarcina 2P, 32A	1
Q1	Intreuptor 1P+N, 10A, C, 6kA, 30mA	6
Q2	Intreuptor 1P+N, 16A, C, 6kA, 30mA	7
Q3	Intreuptor 1P+N, 16A, C, 6kA	1
Q4	Intreuptor 1P+N, 10A, C, 6kA	1
Q5	Intreuptor 1P+N, 6A, C, 6kA	1
K1	Contacteur 2P, 40A, 230V	1
k2	Contacteur 2P, 20A, 230V	2
S1	Selector cu 2 pozitii 16A	1
HL	Lampa prezenta tensiune, culoare verde, 230V	1
P1	Contor cu masura directa, 230V + conexiune ModBus	3
HL-UPS	Lampa prezenta tensiune, culoare rosie, 230V	1
T	Cofret pentru aparat, cu usa transparenta, IP31, intrare, iesire pe sus	1
KN1	Actuator 12 channels ON / OFF - 10 A / 230 V PN: MTN649212	1
KN2	Control unit 0-10 V REG-K/3-gang with manual mode PN: MTN646991	1
KN3	Heating actuator REG-K/6x230/0.05 A PN: MTN645129	1
KN4	ANIMEO KNX MOTOR CONTROLLER 4AC SM 230 VAC PN: 1860116 DIN RAIL MOUNT	1
KN5	KNX power supply REG K PN: MTN683832	1
KN6	Interfata KNX / IP HomeLynk / RS232 / ModBus	1
KN7	Interfata KNX / USB	1
KN8	Modul analogic 4 intrari cod MTN644492	1
KN9	Sursa alimentare modul analogic/modul IP	1

Observatii
 Tasta de test "T" a intreruptoarelor diferentiale se va actiona lunar
 Tabloul electric se va asambla si se testa conform standardului SR EN 61439
 Aparatele vor fi in conformitate cu standardul SR EN 60898

6	07.02.2014			
Revizia	Data	Descriere		
VERIFICATOR	NUME	SEMNATURA	CERINTA	REFERAT NR./DATA
PROIECTANT S.C. MHT EXPERIENCE SRL-D Str. Valea Calugareasca, Nr. 15, Bl. Z1, Sc.1, Sector 6, Bucuresti		Beneficiar: ANDREI MACAVEI Proiect: LOCUINTA - INSTALATII ELECTRICE DE AUTOMATIZARE KNX		FAZA: DDE
PROIECTAT	SOCA ALEXANDRU	SCARA / DATA 02.2014	Denumire plansa: Tablou Electric General de Automatizare si Comanda - KNX	
DESENAT	SOCA ALEXANDRU		Plansa: IKNX-04	
VERIFICAT	ANDREA CRIVOI			