

Upgrading the IP150 to v4.1

Requirements

- [IP Exploring Tool](#)
- InField Firmware Upgrade Software v4.24 (found in [BabyWare V4.3](#))
- [IP150 version 4.1](#) firmware file
- Internet connection

To Upgrade the IP150 Module On Site:

1. Use the IP Exploring Tool to find the IP address of the IP150 on the network.
2. In the router, set port forwarding of port 10000 (or the software port number the IP150 was changed to) to the IP150 IP address. Make sure that it is done for both internal and external ports and set for TCP and UDP.
3. Connect to the panel:
 - a. Open the InField software.
 - b. Select the **Internet** tab and choose either **Panel S/N** or **IP/DNS** radio button and fill in the required connection details (or **Static IP** tab for IP150 version below V4.0).
 - c. Select **Connect**.

InField connects to the panel and the “Product Login” window is displayed.

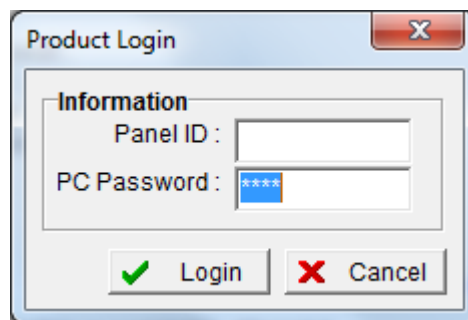


Figure 1 : Login Message

4. Enter the Panel ID and PC Password of the panel and select **Login** (0000 by default for both).

In-Field logs into the site, displaying the panel and connected modules.

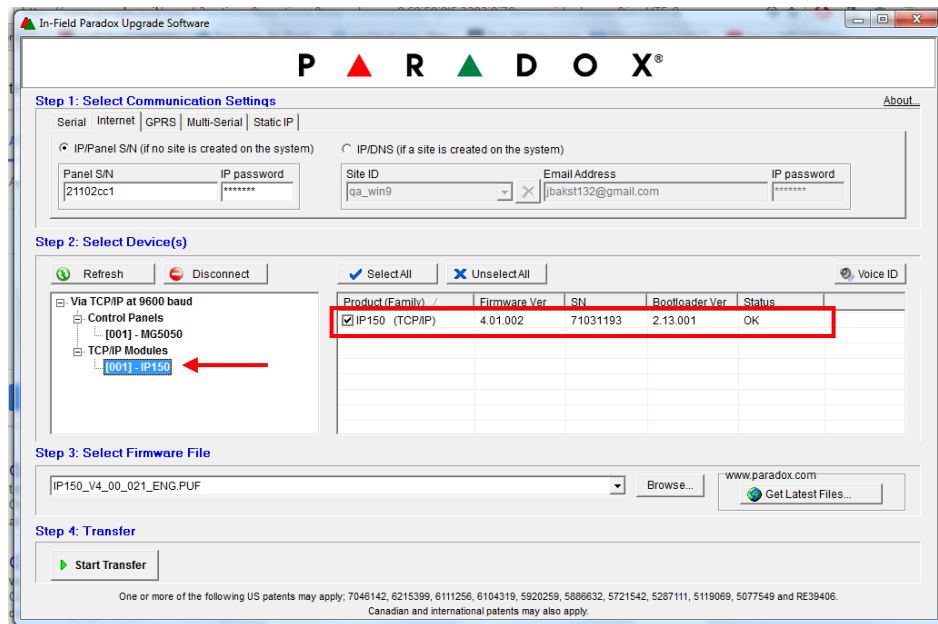


Figure 2 : InField connected to IP150

5. Select the **IP150** in the left pane of the **Select Device(s)** field.

In-Field connects to the IP150 and displays the IP150 details in the right pane of the **Select Device(s)** field.

6. Upgrade the IP150 firmware file.
 - a. Select **Browse** from the Step 3 **Select Firmware File** field.
 - b. Select version 4.1 of IP150 firmware stored on the PC/ laptop.

The selected file is displayed in the Step 3 **Select Firmware File** field.

- c. Select the **Start Transfer** button.

The upgrade process will then start.

- d. At the end of the process a “successful transfer” message will be displayed.
Do not interrupt the process as long as progress bar is moving up.

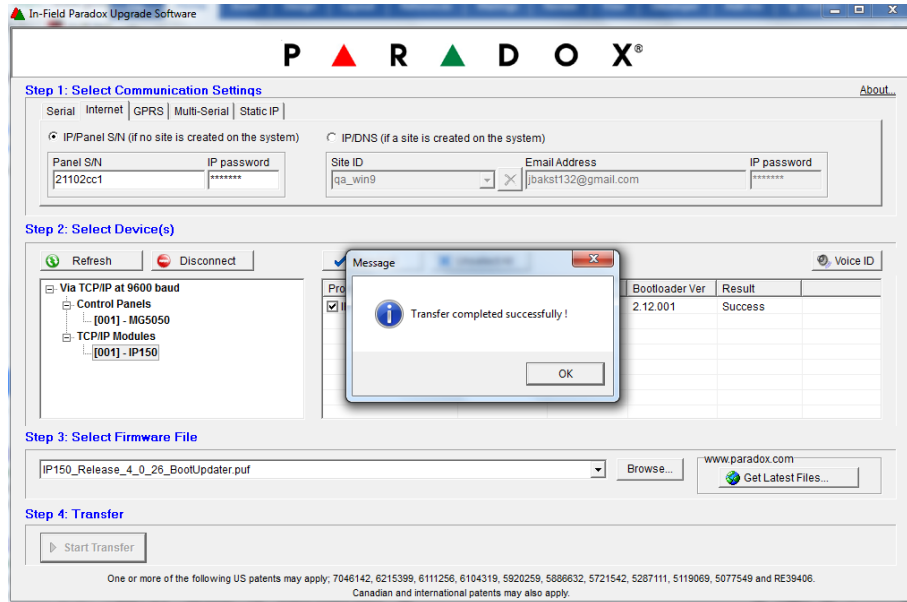


Figure 3 : Transfer Completion Message

- e. Select **OK**.

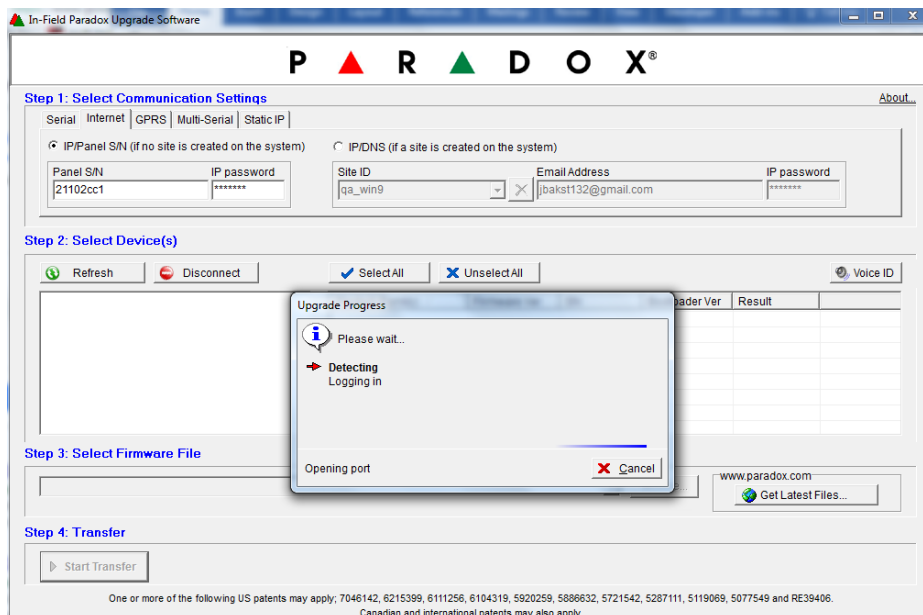


Figure 4 : Logging-in to the IP150

- f. InField logs into the IP150. (If the firmware was upgraded from a V1.0 or V3.0, press **Cancel** on the **Upgrade Progress** window, click on **Disconnect**, select the **Internet** tab, choose either **Panel S/N** or **IP/DNS** radio button, fill in the required connection detail and click on **Connect**.
- g. After logging in, the upgraded IP150 details are displayed in InField.

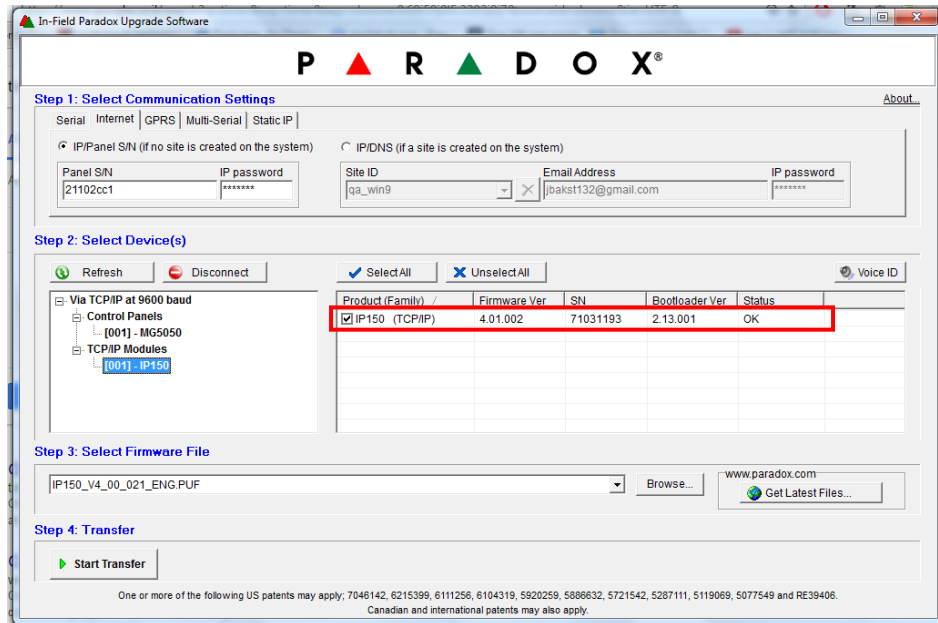


Figure 5 : Upgraded IP150 Details

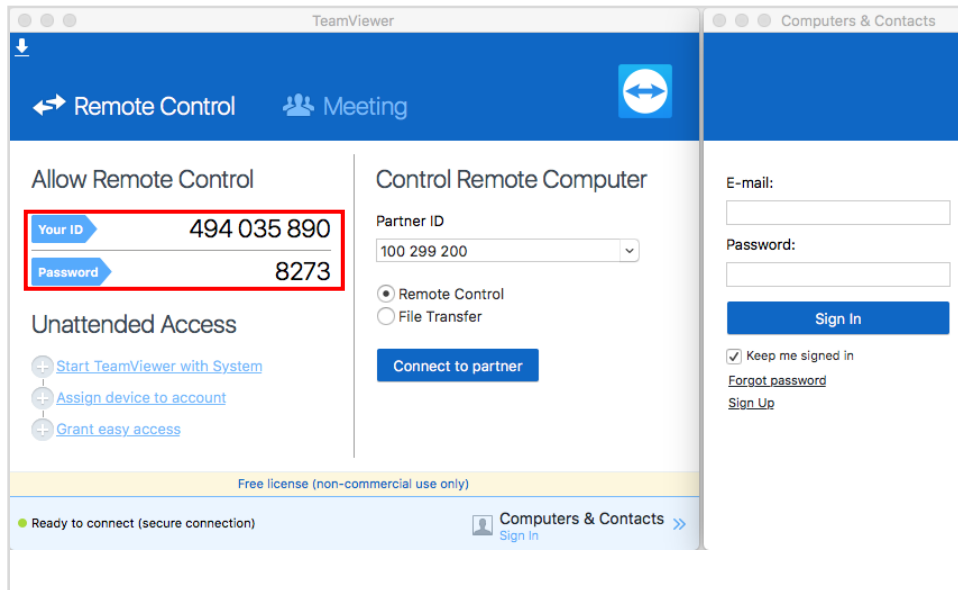
7. The upgrade process to version 4.1 is now complete.

Upgrading via TeamViewer

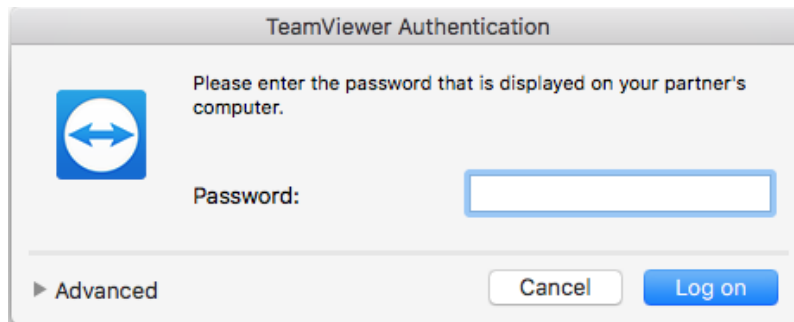
To facilitate off-site firmware upgrades and avoid having to drive to sites as much as possible, we suggest using a 3rd party software named TeamViewer.

1. Download TeamViewer by following this [link](#) and save it to your desktop (works on both Windows and iOs)
2. Double-click the installation file and follow the steps on the screen to install the software on your computer.
Important: Software must also be installed on your customer's computer.

3. After installing, TeamViewer will open automatically.



4. Ask your customer to provide the 9-digit number appearing in “Your ID” located on the left side of the screen, and enter the number in “Partner ID” on your TeamViewer screen.
5. Once the 9-digits have been entered click “connect to partner”.
6. A screen will appear asking for the password, ask your customer to provide the 4-digits appearing beside “Password” on the left side of the screen, and click “Log on”.



7. You should now be connected to your customer’s computer and have full control of it, same as if you were on site. Please refer to the beginning of this document and follow step by step instructions for successful firmware upgrade of IP150 V4.1.