



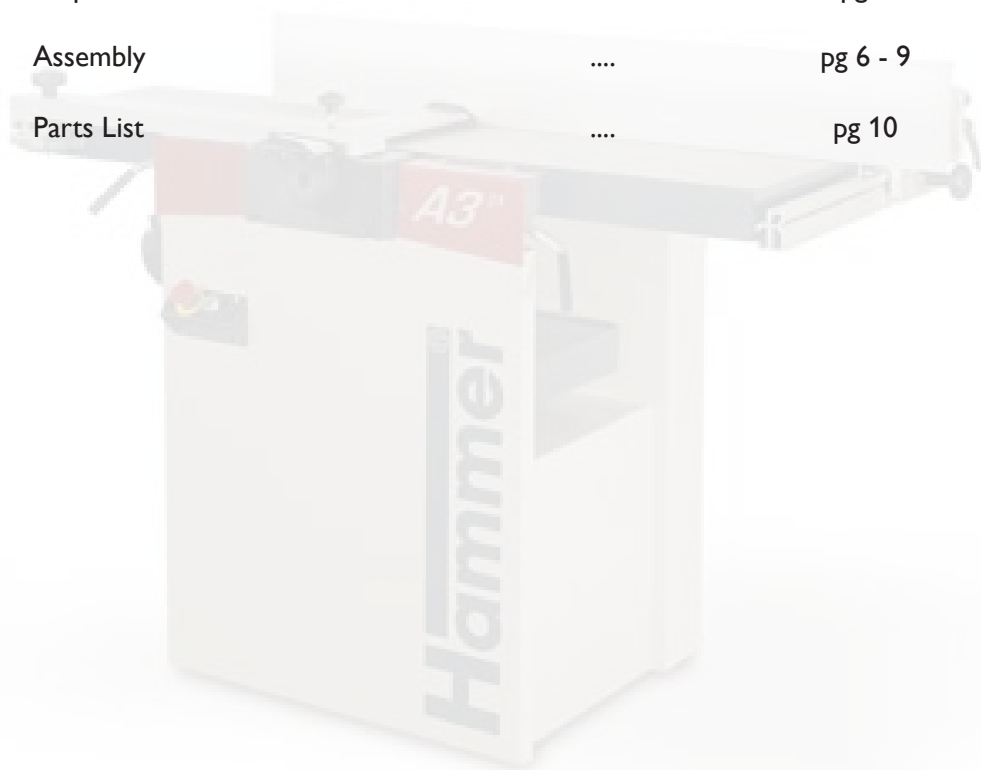
# A3 31 Fence Rail Mounting Instructions





## Table of Contents

Accessories and Tools	....	pg 3
Receiving your HAMMER machine	....	pg 4
Preparation	....	pg 5
Assembly	....	pg 6 - 9
Parts List	....	pg 10





## Receiving your HAMMER machine

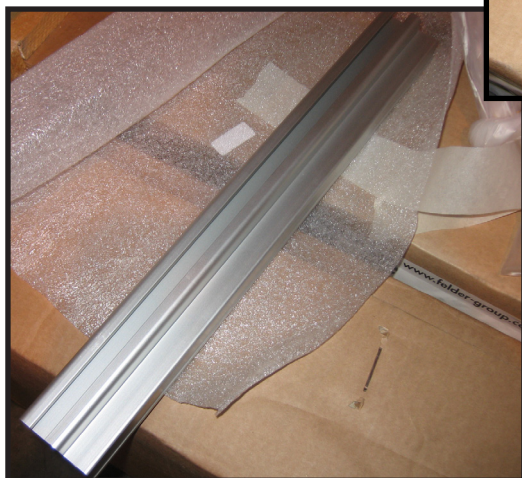
Your Hammer A3-31 woodworking machine is shipped bolted to the pallet, shrink-wrapped with a cardboard box placed around it.

Dimensions including the pallet are typically 3 x 4 with an approx. height of 4 - 5 feet.

When you receive your HAMMER A3-31 Jointer-Planer the rail for the jointer fence is not attached to the cast iron table.



The fence rail is wrapped in foam and all necessary nuts & bolts are shipped in a clear plastic bag.



Both items are labeled with a white sticker showing the machine number.

Start by unwrapping the aluminum extrusion. Place the extrusion on top of the foam to avoid scratches on your new fence plate.



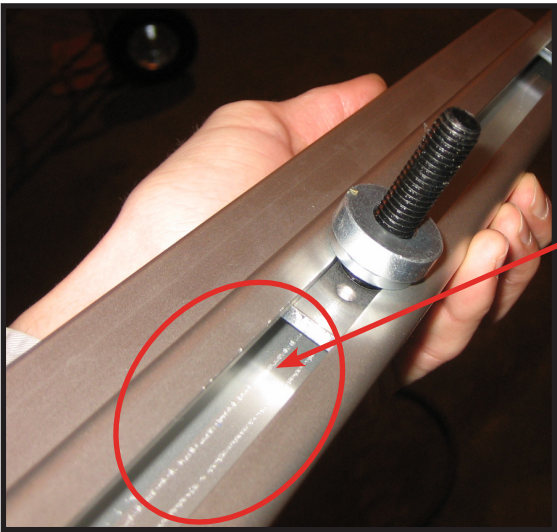
# Preparation



Please check the bolt-heads for a clean smooth surface or excess grain residue!



Sometimes it is necessary smoothen the bolt head. Try to sand off the markings on the bolthead with some sand paper to avoid any scratching inside the groove of the aluminum extrusion and to ensure a smooth sliding motion.



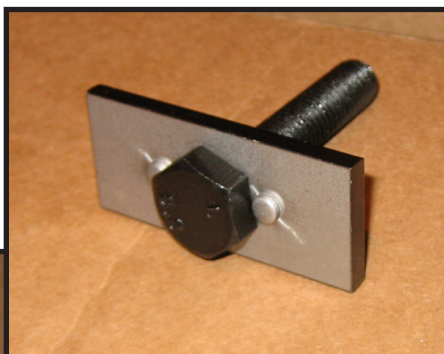
Scratches caused by the markings on the bolthead.



## Assembly

Assemble each bolt with metal T-plate as shown in the picture to the right.

Now slide both assembled bolts into the groove of the aluminum extrusion as shown below.



Put each thick washer onto each black bolt as seen below.





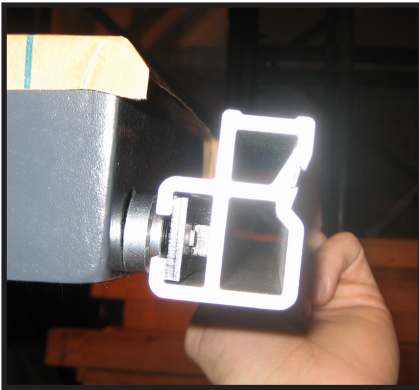


## Assembly

Unwrap your machine until you have full access to the two precision machined holes in the cast iron table.



Attach the aluminum extrusion onto the cast iron table. Insert the bolts into the machined holes.

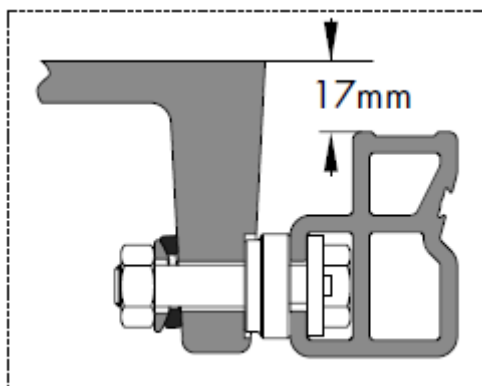
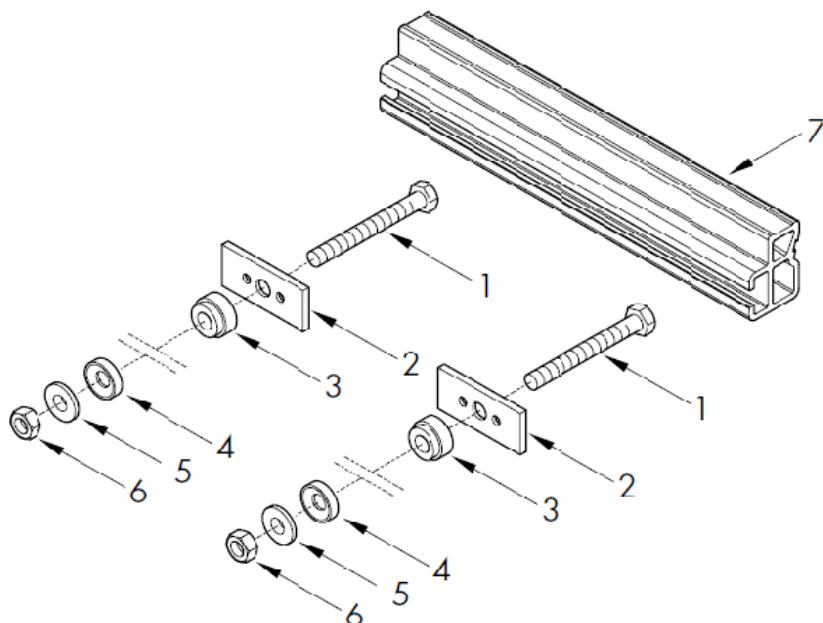


If you should run into any kind of problem or difficulties please contact Felder USA Service Department immediately either toll free or at [service@felderusa.com](mailto:service@felderusa.com).

**NOTE:** Make sure that the thick washers on the bolts line up properly with the machined round circles in the cast iron table to avoid that the rail is mounted in a slight angle. This would throw off the alignment of the jointer-fence.

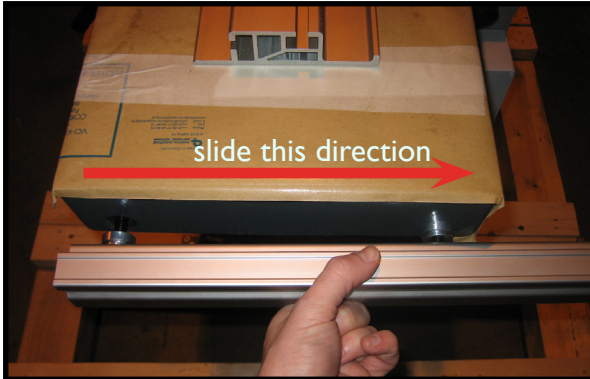


# Assembly



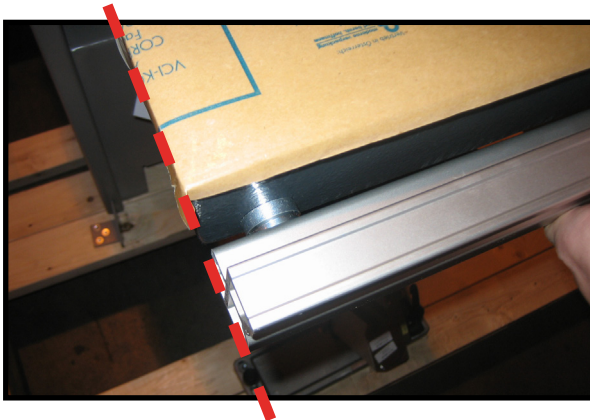


## Assembly



Have the two nuts for the bolts handy.

Now slide the extrusion as far to the right until the left side of the extrusion is flush with the cast iron table.



Double check alignment.



Once the aluminum extrusion is lined up properly attach nuts to bolts from behind and start fastening the nuts with the open wrench.

**NOTE:**  
Do not overtighten.





## Assembly

To mount the fence rail you need a 17mm open wrench and possibly some sandingpaper (see picture).

The content of the accessories bag is shown below.

Please check if you received all. In case that any of the below items should be missing please contact Felder Group USA immediately at our toll free number 866-792-5288 !





# Parts List

Felder Group USA Toll Free:

East     866 - 792 - 5288  
West    800 - 572 - 0061  
S. CA    866 - 714 - 6005

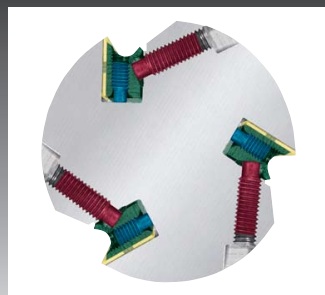
or shop online:



Description	Part No.	Price \$
Planer Blades	500-07-002	\$ 61.49
Handwheel	12.1.311	\$ 44.69
Dial Indicators:		
in inches	01.2.202	\$123.09
in mm	01.1.202	\$ 72.69
Grease Gun	12.1.312	\$ 25.65
Grease 400g	10.2.001	\$ 18.93
Supergleit:		
0.13 gal	10.0.010	\$ 22.29
0.79 gal	10.0.011	\$ 63.73
Tapemeasure		
5 m / metric	12.1.313	\$ 6.72
16 ft / imperial	12.1.314	\$ 6.72



**FOR TECHNICAL ASSISTANCE CALL TOLL FREE  
866 792 5688  
SERVICE DEPARTMENT FELDER GROUP USA**



**For more information on the A331  
or other Hammer Products please visit our website @**

**Hammer** 