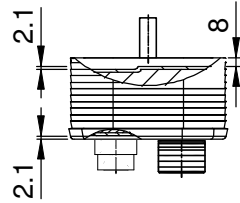
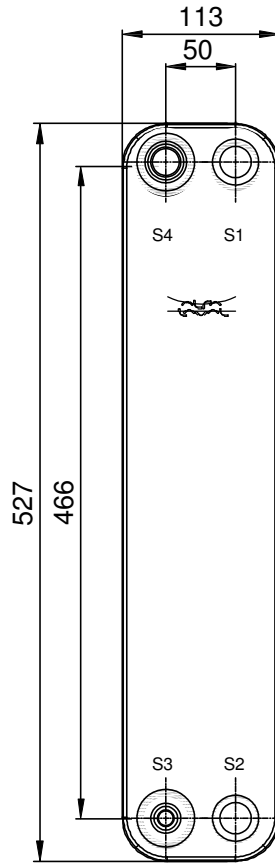
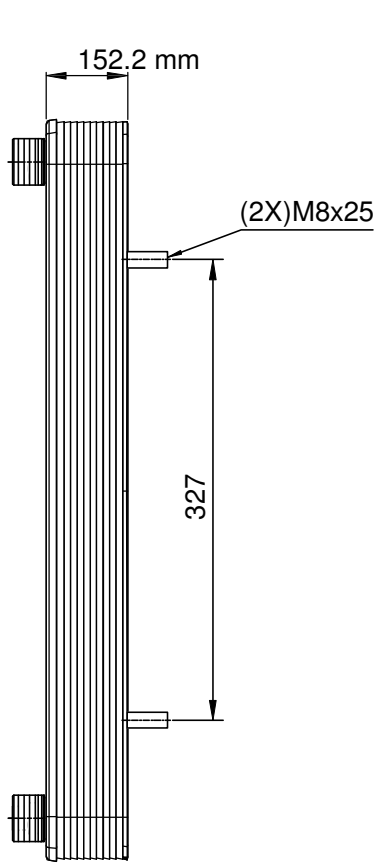
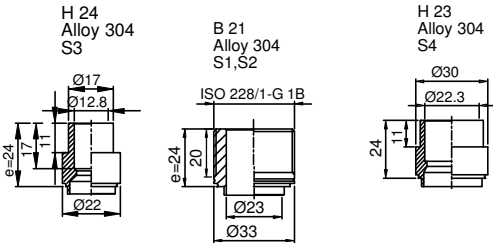


Note that all unique customer requirements (i.e tolerance) need to be verified thru Alfa Laval.



Frameplate is depressed 2.1 mm at connections S3 and S4 if holed.
Pressureplate is depressed 2.1 mm at connections T3 and T4 if holed.

T1 T2 T3 T4 locations on back side correspond to S1 S2 S3 S4 on front side

ALL DIMENSIONS IN MILLIMETERS

HEATING SURFACE		PLATE MATERIAL	Alloy 316	TOTAL LENGTH	193.2
NETWEIGHT	12.76 kg			TOTAL WIDTH	113.0
OPERATING WEIGHT		PLATE GROUPING	1*29H/1*30H	TOTAL HEIGHT	527.0

SUPPLIER	REF.	MP NO.
AGENT/REF.		
CUSTOMER NAME / REF. NO.		
SIGN.		

PLATE HEAT EXCHANGER

CB60-60H-F
PED



ITEM ID.
32871 2355 4

DATE
2021-05-12

REV
No. 0

MEDIA	INLET	TEMP.	OUTLET	TEMP.	FLOW RATE	PRESSURE DROP	LIQUID VOL.
	S1		S2				3.09 dm ³
	S3		S4				2.99 dm ³