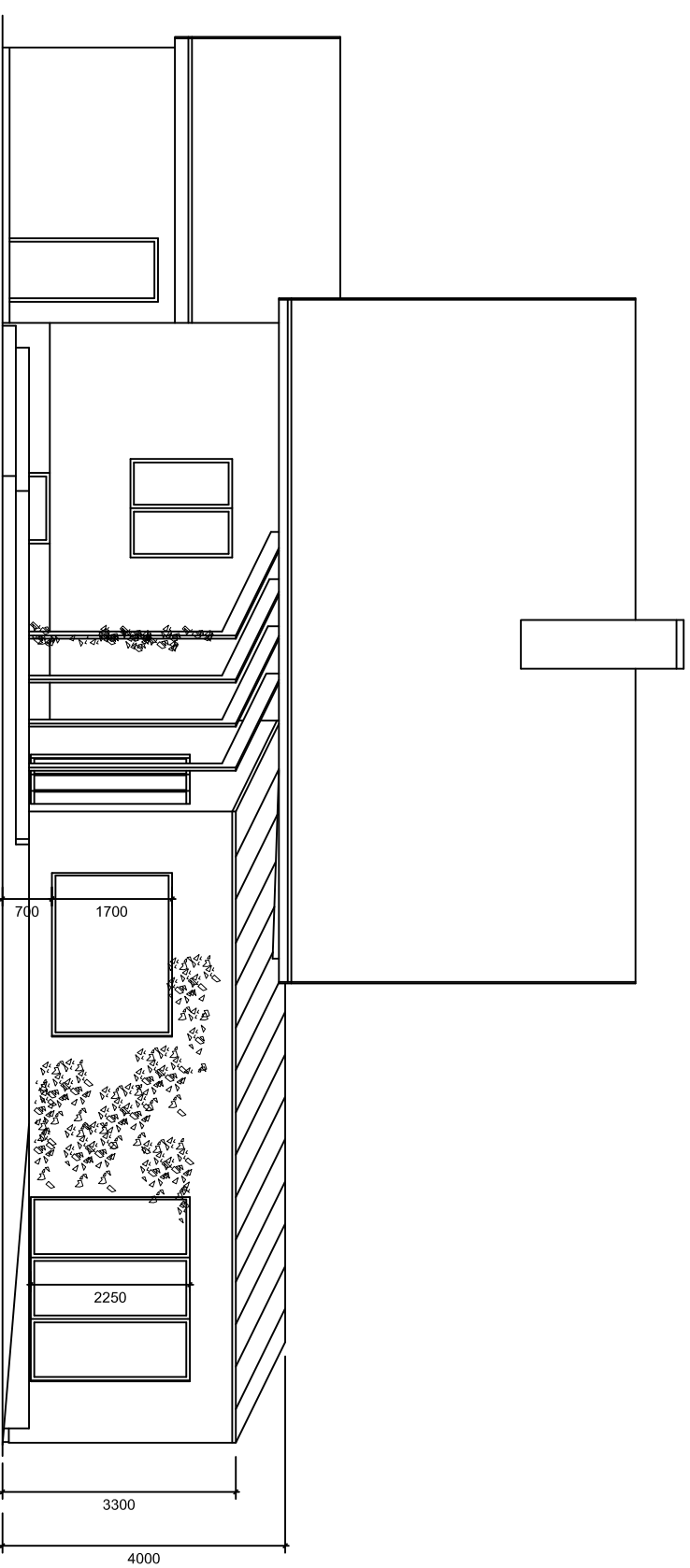
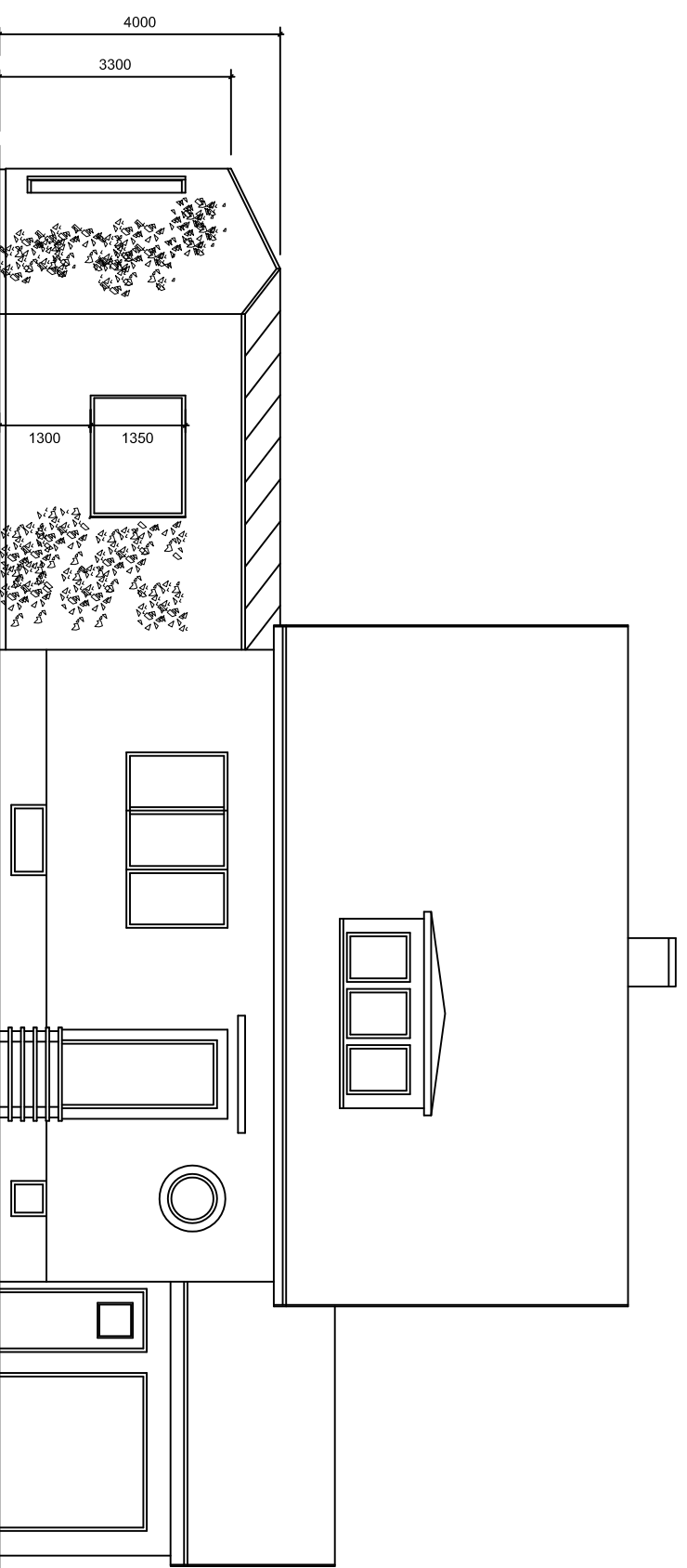


Förklaringar

- Grundläggning = platta på mark
Stomme = 400 mm isoblock
Fasad = Puts i kulör RAL 7016
Fönsterpartier = Aluminiumprofiler i kulör RAL 7016
Övrig plåbeslagning = Reinznik
Tak = Bandtäckt plåt (Reinznik) med dubbelvals



Fasad mot Väst, Skala 1:100



Fasad mot Öst, Skala 1:100

Bygglovshandling

RONANDER & LAURSEN
ARKITEKTER AB

TEGELGÅRDSGATAN 7
211 33 MALMÖ

Lomma 32:58
Poppelgatan 3, Lomma
Tillbyggnad av Villa
Fasad mot Väst & Öst

SKALA	1:100
DATUM	2016-05-15
RITAD AV	
HANDL.	
SIGN.	
RITN. NR.	A 200

This drawing is the property of RONANDER & LAURSEN ARKITEKTER AB. Copying, reproducing, or otherwise using this drawing without the written consent of RONANDER & LAURSEN ARKITEKTER AB is prohibited. The architect and the contractor shall be held liable for any errors or omissions in this drawing. The architect and the contractor shall be held liable for any errors or omissions in this drawing. The architect and the contractor shall be held liable for any errors or omissions in this drawing.