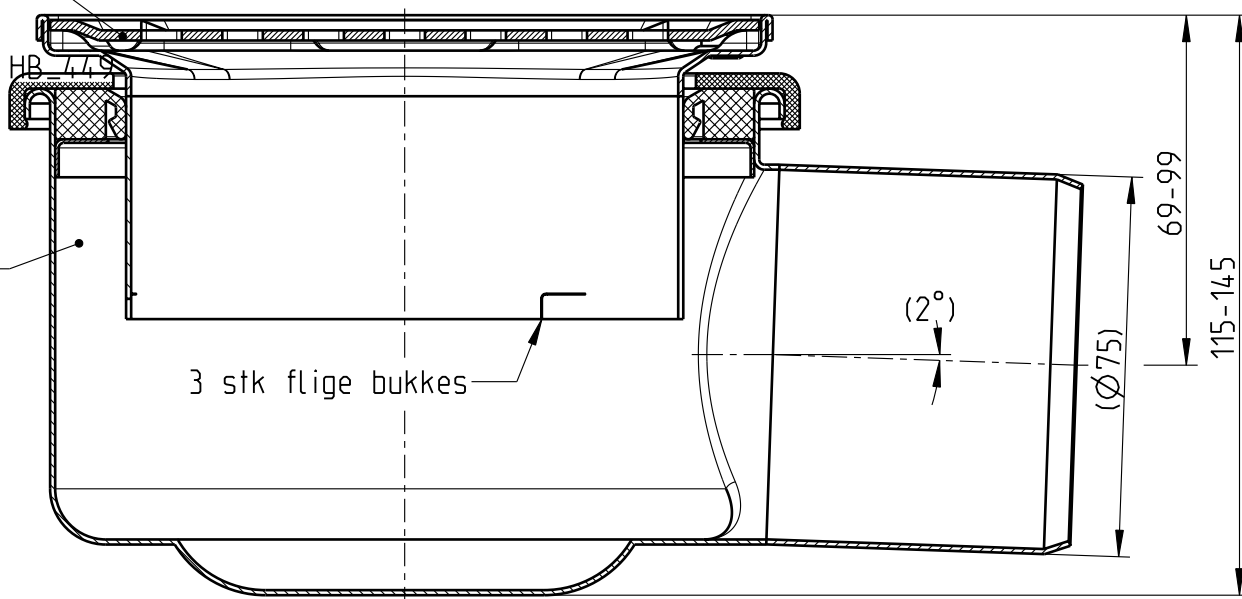


Ramme/rist påklæbes beskyttelsefolie 700268[©]

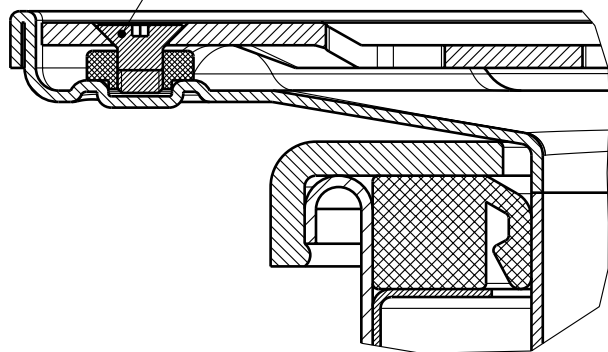
H0_0283

©

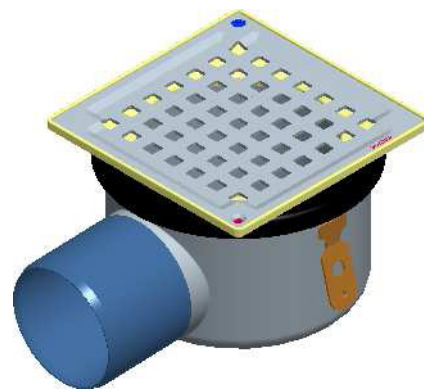


SECTION B-B

400161 M4x6 US/PZ (2 stk)
447010 Starlock (2 stk) ©



SECTION A-A
SCALE 3:2



SCALE 1:4

Typenr.: 110.300.075

DS/ISO 2768-C	0.5 < M ≤ 3 ± 0.2	3 < M ≤ 6 ± 0.3	6 < M ≤ 30 ± 0.5	30 < M ≤ 120 ± 0.8	120 < M ≤ 400 ± 1.2	400 < M ≤ 1000 ± 2	1000 < M ≤ 2000 ± 3	2000 < M ≤ 4000 ± 4
Skruer/ændr. Str. V. bult 981204 PH 071012 HHR 071221 HHR								
Ikke angivne tolerancer ifølge: Not stated tolerances according to: DS/ISO 2768-C					BLÜCHER® Overflade/Surface Bejdset		Areal/ Area Vægt/ Weight 1.225 m ² kg	
Materiale/Material		Målestok/Scale	Tegnet/Drawn		Kontrolleret/Checked		Erstatet af/ Replaced by	
Werkst. Nr.		67:100	980126 HHR				Erstatning for/ Replacement for	
Titel/Designation							Tegning Nr./Drawing No.	
Afløb m/Ø75 vandret udløb, justerbar							PB_445 C	

Denne tegning tilhører BLÜCHER Metal A/S, Danmark og er beskyttet af gældende lov. This drawing is the property of BLÜCHER Metal A/S, Denmark and is protected by pending law. Den må ikke afhændes, udlånes eller kopieres uden firmaets udtrykkelige skriftlige tilladelse. It must not be transferred, lent or reproduced without an explicit written permission from the company.