



<b>EAN:</b>	4013288237125	<b>Size:</b>	570x460x50 mm
<b>Part number:</b>	05136614001	<b>Weight:</b>	1466 g
<b>Article number:</b>	Adventskalender 2026	<b>Country of origin:</b>	CZ
		<b>Customs tariff number:</b>	82054000

- Advent calendar for tool fans
- Iconic battery-powered Kraftform torch with screwdriving function, two brightness levels (energy-efficient), 1/4" bit mounting, automatically focusing light cone for optimal illumination
- Torch with screwdriving function, bits, L-key and Kraftform handle stored on four modular holders
- The modular holders can be attached to the textile tool-dock
- All modular holders can be combined with the Wera Modular system, using the adapter included in the set
- Bottle opener for an evening well-deserved

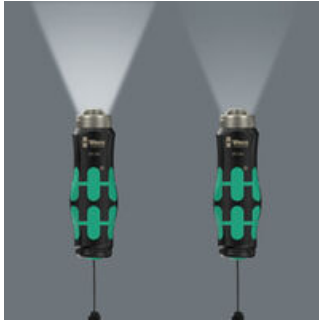
The iconic Kraftform handle as a torch with screwdriving function and other premium tools - Wera's Advent calendar includes 24 surprises that will make every tool fan's heart beat faster in the 2026 Christmas season. A special highlight: the compact, high-performance torch with screwdriving function in the design of the Kraftform handle. Not only does it provide necessary light - with a bit inserted, the torch can also be used for screwdriving. Behind the 24 doors you will also find 9 bits, one handle with 1/4" mounting, 7 L-keys. Everything is safely stored in four modular holders. One particularly stylish, sturdy textile tool-dock on which all four tool modules can be securely attached. This keeps the tools neatly stored and always within easy reach. One adapter, which also allows the tool modules to be connected to the Wera Modular system. The bottle opener gives you something to look forward to after a job well done!

**Web link**  
<https://www.wera.de/en/05136614001>

Wera - Adventskalender 2026  
 05136614001 - 4013288237125

Wera Werkzeuge GmbH  
 Korzter Straße 21-25  
 D-42349 Wuppertal  
 Tel: +49 (0)2 02 / 40 45-0  
 E-Mail: info@wera.de

**Torch with two brightness levels**



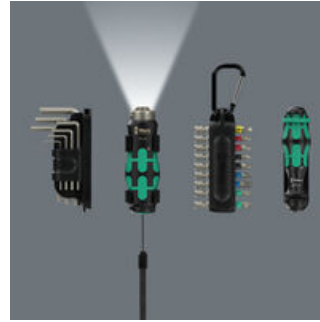
The battery-powered torch (LED, 80 lumens) can be switched between two brightness levels (50% and 100%) to save energy. The automatically focusing light cone ensures optimal illumination at all times.

**1/4" hexagon drive**



The integrated 1/4" bit mounting allows the torch to also be used for screwdriving.

**Modular storage**



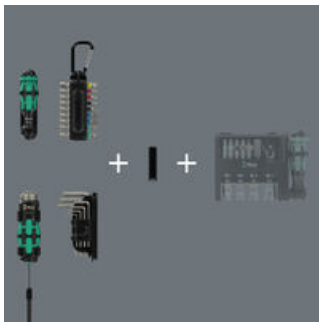
Bits, L-key, Kraftform handle and the torch with screwdriving function are stored in four tool modules, so they can also be used separately if needed.

**Practical all-round storage**



The tool modules can be attached to the textile tool organizer. One loop for the bottle opener and one for the adapter complete this organized tool set storage solution.

**Suitable for the Wera Modular system**



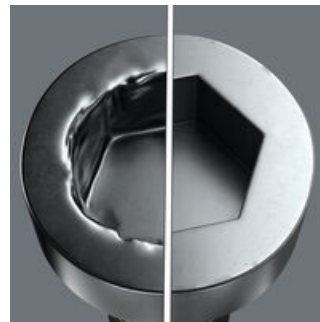
All tool modules can be connected to the components of the Wera Modular system using the adapter included in the set.

**BiTorsion Bits**



9 bits (50 mm length; for slotted, Phillips-head (Phillips and Pozidriv), TORX®, hexagonal) with BiTorsion zone. The BiTorsion zone cushions peak loads and prevents the tip from breaking prematurely.

**L-key with Hex-Plus profile**



7 L-keys for hexagonal socket screws (sizes: 1.5; 2.0; 2.5; 3.0; 4.0; 5.0; 6.0) with Hex-Plus profile. The Hex-Plus profile reduces the rounding of the hexagon profile in the screw head.

**Kraftform handle**



With the hexagonal bit mounting, the Kraftform handle is suitable for 1/4" bits.

Set contents:

9115 Torch with screwdriving function "Flashdriver"; with 1/4" bit mounting, 94.6



1x 94.6



9111 Clip adapter for screw lamp "Flashdriver", 91 x 32 x 30 mm

1x 91 x 32 x 30 mm



815/1 Bitholding screwdriver, 1/4" x 78 mm



05145100001

1x 1/4" x 78 mm



9112 Clip adapter for Kraftform 815/1 handle, 91 x 34 x 16.3 mm

1x 91 x 34 x 16.3 mm



Web link

<https://www.wera.de/en/05136614001>

Wera - Adventskalender 2026  
05136614001 - 4013288237125

Wera Werkzeuge GmbH  
Korzter Straße 21-25  
D-42349 Wuppertal  
Tel: +49 (0)2 02 / 40 45-0  
E-Mail: [info@wera.de](mailto:info@wera.de)

9113 Bit clip with snap hook, 92 x 18.8 x 23 mm

1x 92 x 18.8 x 23 mm



851/4 BTZ Bits, PH 1 x 50 mm



1x PH 1 x 50 mm  
1x PH 2 x 50 mm

855/4 BTZ Bits, PZ 1 x 50 mm



1x PZ 1 x 50 mm  
1x PZ 2 x 50 mm

867/4 BTZ TORX® Bits, TX 25 x 50 mm



1x TX 25 x 50 mm  
1x TX 20 x 50 mm

840/4 BTZ Bits, 4 x 50 mm



1x 4 x 50 mm  
1x 5 x 50 mm

800/4 BTZ Bits, 0.8 x 5.5 x 50 mm



1x 0.8 x 5.5 x 50 mm

950 L-key, metric, chemically nickel-plated, 1.5 x 45 mm



1x 1.5 x 45 mm  
1x 2 x 50 mm  
1x 2.5 x 56 mm  
1x 3 x 63 mm  
1x 4 x 70 mm  
1x 5 x 80 mm  
1x 6 x 90 mm

1) Regular hexagon

Web link

<https://www.wera.de/en/05136614001>

Wera - Adventskalender 2026  
05136614001 - 4013288237125

Wera Werkzeuge GmbH  
Korzter Straße 21-25  
D-42349 Wuppertal  
Tel: +49 (0)2 02 / 40 45-0  
E-Mail: [info@wera.de](mailto:info@wera.de)

Tool-Check Modular L-key Hex-Plus 1, empty, 124.5 x 91 x 22 mm

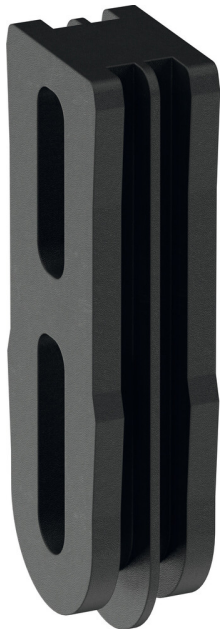
1x 124.5 x 91 x 22 mm



9549 Adapter for Tool-Check Modular, 10.5 x 47 x 16.5 mm

05049005001

1x 10.5 x 47 x 16.5 mm



9114 Bottle opener with 1/4" hexagon connection, 51

1x 51



**Web link**

<https://www.wera.de/en/05136614001>

Wera - Adventskalender 2026  
05136614001 - 4013288237125

Wera Werkzeuge GmbH  
Korzter Straße 21-25  
D-42349 Wuppertal  
Tel: +49 (0)2 02 / 40 45-0  
E-Mail: [info@wera.de](mailto:info@wera.de)

9590 Textile Tool-Dock, without tools, 220 x 135 mm

1x 220 x 135 mm



**Web link**

<https://www.wera.de/en/05136614001>

Wera - Adventskalender 2026  
05136614001 - 4013288237125

Wera Werkzeuge GmbH  
Korzter Straße 21-25  
D-42349 Wuppertal  
Tel: +49 (0)2 02 / 40 45-0  
E-Mail: [info@wera.de](mailto:info@wera.de)