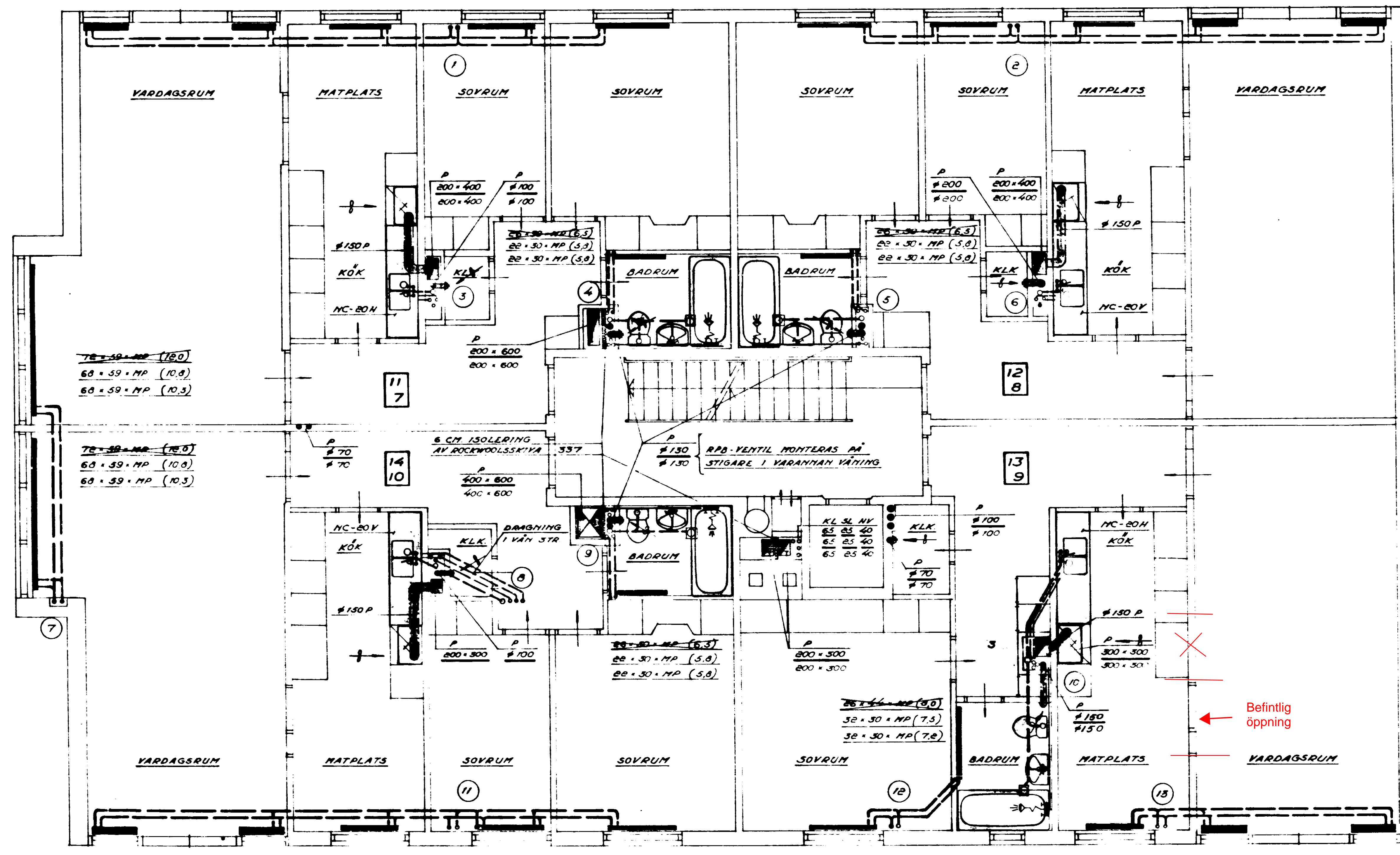


11 - LÖSNINGSNUMMER
7

SANTLIGA AVLOPPSSTAMMAR DIMENS 100

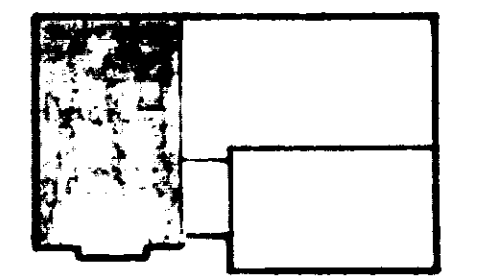
3 TR	20-59-MP3 (11,0)	20-59-MP3 (11,0)	20-44-MP (8,0)	30-44-MP (10,0)	30-44-MP (10,5)	30-44-MP (8,0)	30-44-MP (8,5)	30-44-MP (8,5)	20-59-MP4 (11,0)	20-59-MP4 (11,0)
4 TR	20-59-MP3 (10,0)	20-59-MP3 (10,0)	26-44-MP (7,0)	30-59-MP (9,0)	32-59-MP (9,0)	32-59-MP (8,5)	30-59-MP (8,5)	26-44-MP (7,0)	20-59-MP3 (10,0)	20-59-MP3 (10,0)
3 TR	20-59-MP3 (9,5)	20-59-MP3 (9,5)	26-44-MP (7,0)	30-59-MP (8,7)	32-59-MP (8,7)	30-59-MP (8,4)	30-59-MP (8,4)	26-44-MP (6,9)	20-59-MP3 (9,5)	20-59-MP3 (9,5)



KÖK	EKA - KÄPÅN	-30/300 M ³ /H
BÄD	RFB 50	-60 M ³ /H
KLK	RFB 50	-15 M ³ /H

fs 12/4 1976

REV. DEN 29-8-83
SÖNART FLVITAT



3 TR	20-59-MP3 (9,5)	20-59-MP3 (9,5)	20-44-MP (8,0)	30-44-MP (9,5)	30-44-MP (8,0)	30-44-MP (10,0)	30-44-MP (9,5)	30-44-MP (8,5)	20-59-MP4 (10,5)	20-59-MP4 (10,5)
4 TR	20-59-MP3 (9,0)	20-59-MP3 (9,0)	26-44-MP (7,0)	30-59-MP (8,0)	32-59-MP (8,5)	32-44-MP (9,5)	30-59-MP (8,5)	26-44-MP (7,0)	20-59-MP3 (10,0)	20-59-MP3 (10,0)
3 TR	20-59-MP3 (8,0)	20-59-MP3 (8,0)	26-44-MP (6,9)	30-59-MP (8,0)	32-59-MP (8,1)	30-44-MP (9,0)	30-59-MP (8,0)	26-44-MP (7,3)	20-59-MP3 (9,9)	20-59-MP3 (9,9)

Inkom Bdn i Karlstad den 20/11 1976
Granskad med utgången från ventill
Hörs- och värme- och ventilations
den 18/11 1976
Tillhör stadsingenjörens 2. st. utskott
20/11 1976 nr 10/14, belyst
1976

Pettersson